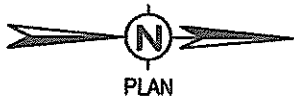
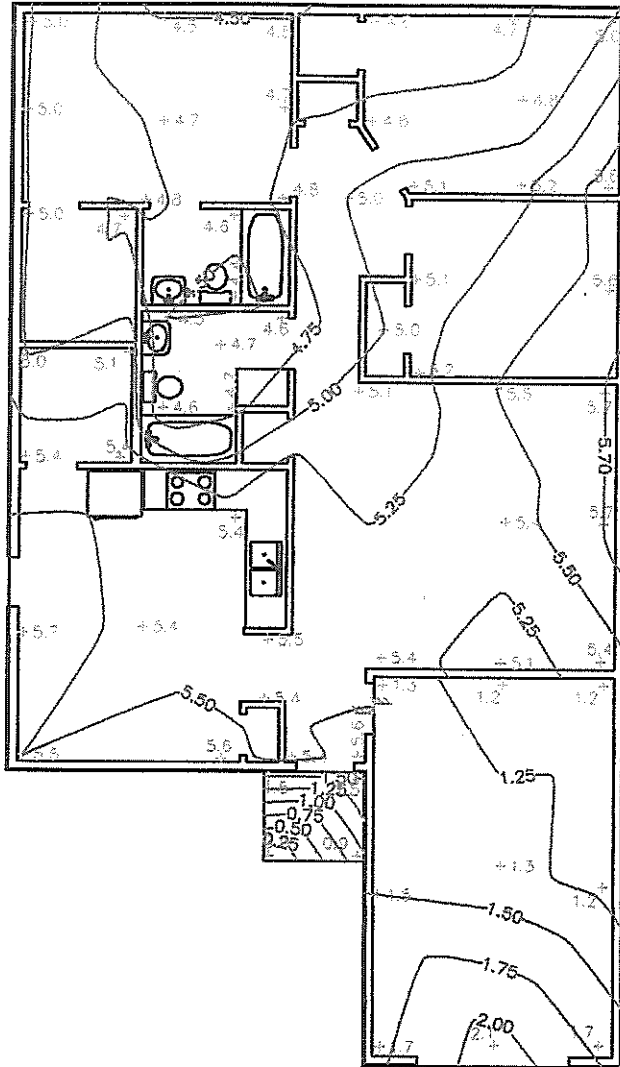

Appendix B

Elevation Surveys

NOTES:

1. ELEVATION SHOTS ARE IN INCHES.
2. CONTOURS SHOWN ARE AT 0.25 INCH INTERVALS.
3. FOUNDATION ELEVATIONS PRESENTED ON THIS DRAWING ARE BASED ON TOP OF FLOOR MEASUREMENTS WHICH HAVE BEEN ADJUSTED TO ACCOMMODATE MEASURED OR ASSUMED FLOOR FINISH THICKNESS.



INTERIOR ELEVATIONS

SCALE: 1" = 10'

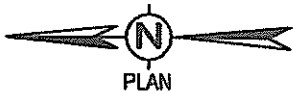
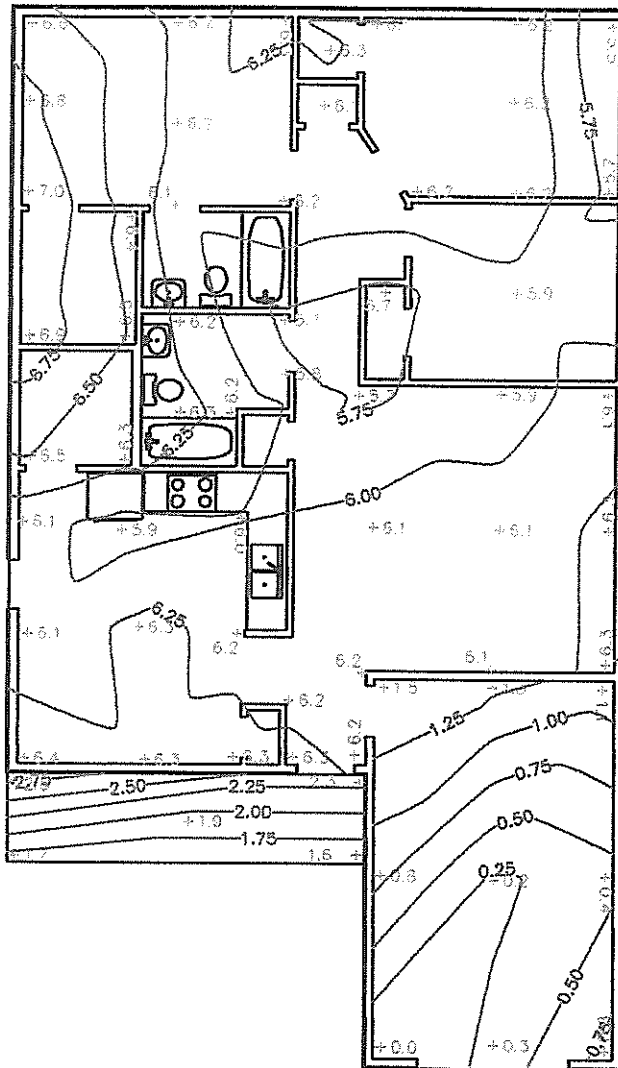
 **AccuTech Consultants, LLC**
STRUCTURAL & FORENSIC ENGINEERING

SUBJECT: INTERIOR ELEVATIONS
PROJECT: 1603 NW 26TH
BY: BDS PROJECT No.: CTR001-F
CHECK: JDF DATE: 4/25/07

SHEET
1
OF
APPENDIX B

NOTES:

1. ELEVATION SHOTS ARE IN INCHES.
2. CONTOURS SHOWN ARE AT 0.25 INCH INTERVALS.
3. FOUNDATION ELEVATIONS PRESENTED ON THIS DRAWING ARE BASED ON TOP OF FLOOR MEASUREMENTS WHICH HAVE BEEN ADJUSTED TO ACCOMMODATE MEASURED OR ASSUMED FLOOR FINISH THICKNESS.



INTERIOR ELEVATIONS

SCALE: 1" = 10'



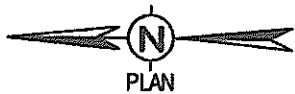
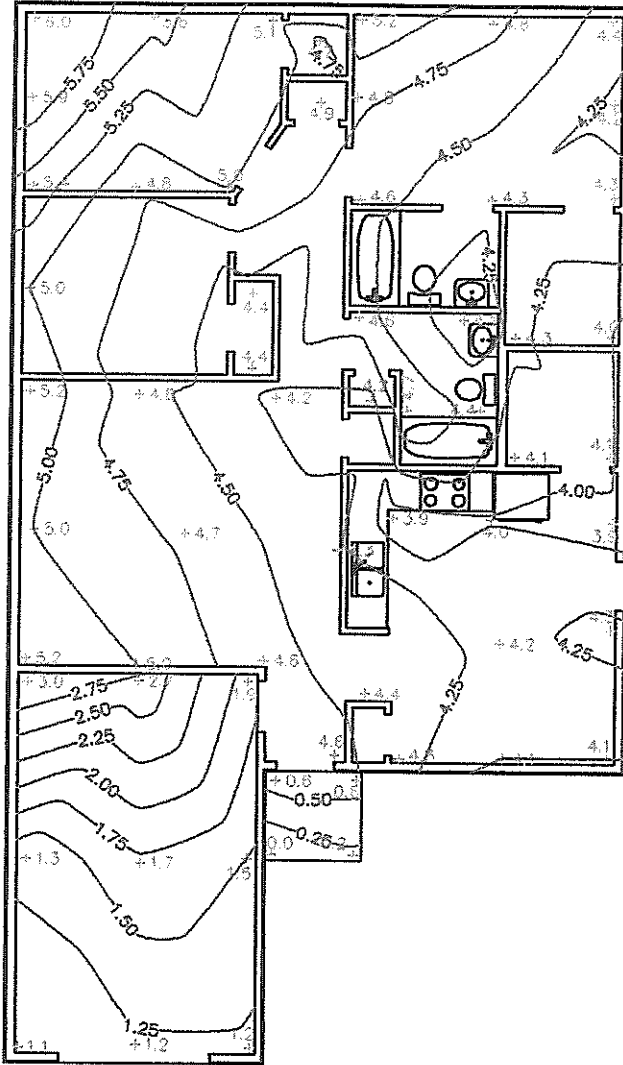
AccuTech Consultants, LLC
STRUCTURAL & FORENSIC ENGINEERING

SUBJECT: INTERIOR ELEVATIONS
PROJECT: 1006 NW 27TH
BY: BDS PROJECT No.: CTR001-F
CHECK: JDF DATE: 4/25/07

SHEET
2
OF
APPENDIX B

NOTES:

1. ELEVATION SHOTS ARE IN INCHES.
2. CONTOURS SHOWN ARE AT 0.25 INCH INTERVALS.
3. FOUNDATION ELEVATIONS PRESENTED ON THIS DRAWING ARE BASED ON TOP OF FLOOR MEASUREMENTS WHICH HAVE BEEN ADJUSTED TO ACCOMMODATE MEASURED OR ASSUMED FLOOR FINISH THICKNESS.



INTERIOR ELEVATIONS

SCALE: 1" = 10'



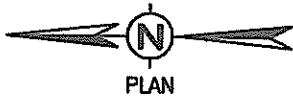
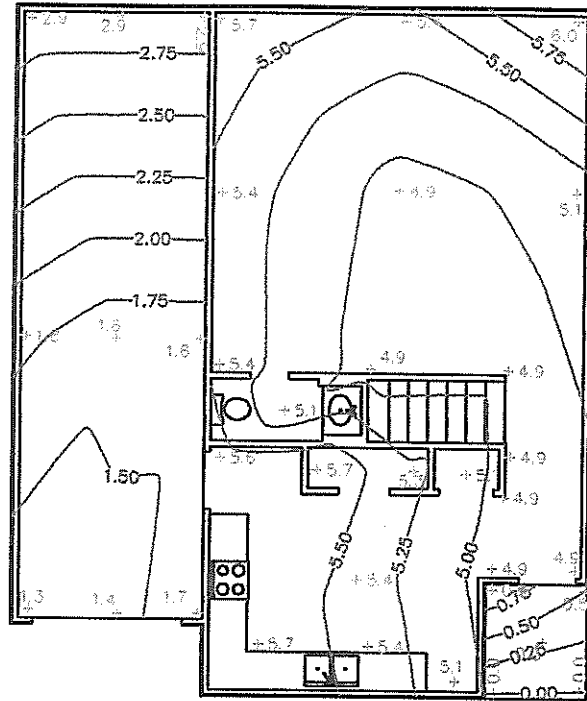
AccuTech Consultants, LLC
STRUCTURAL & FORENSIC ENGINEERING

SUBJECT: INTERIOR ELEVATIONS
PROJECT: 1110 NW 27TH
BY: BDS PROJECT No.: CTR001-F
CHECK: JDF DATE: 4/25/07

SHEET
3
OF
APPENDIX B

NOTES:

1. ELEVATION SHOTS ARE IN INCHES.
2. CONTOURS SHOWN ARE AT 0.25 INCH INTERVALS.
3. FOUNDATION ELEVATIONS PRESENTED ON THIS DRAWING ARE BASED ON TOP OF FLOOR MEASUREMENTS WHICH HAVE BEEN ADJUSTED TO ACCOMMODATE MEASURED OR ASSUMED FLOOR FINISH THICKNESS.



INTERIOR ELEVATIONS

SCALE: 1" = 10'



AccuTech Consultants, LLC
STRUCTURAL & FORENSIC ENGINEERING

SUBJECT: INTERIOR ELEVATIONS

PROJECT: 1114 27TH STREET

BY: BDS PROJECT No.: CTR001-F

CHECK: JDF DATE: 05/23/07

SHEET

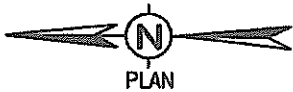
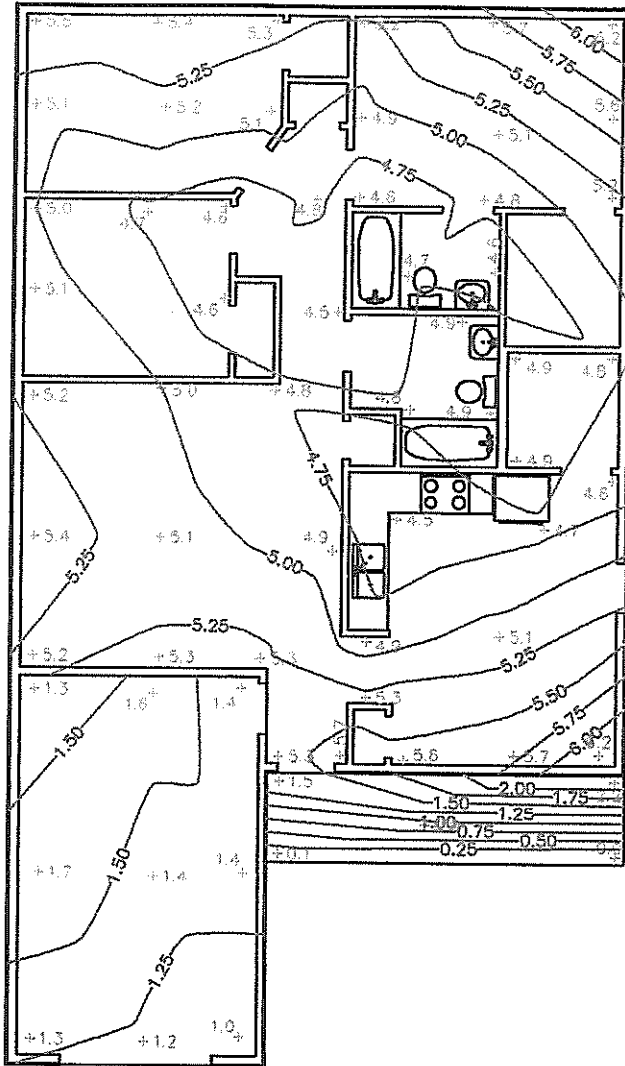
4

OF

APPENDIX B

NOTES:

1. ELEVATION SHOTS ARE IN INCHES.
2. CONTOURS SHOWN ARE AT 0.25 INCH INTERVALS.
3. FOUNDATION ELEVATIONS PRESENTED ON THIS DRAWING ARE BASED ON TOP OF FLOOR MEASUREMENTS WHICH HAVE BEEN ADJUSTED TO ACCOMMODATE MEASURED OR ASSUMED FLOOR FINISH THICKNESS.



INTERIOR ELEVATIONS

SCALE: 1" = 10'



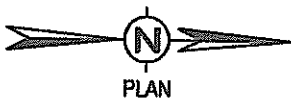
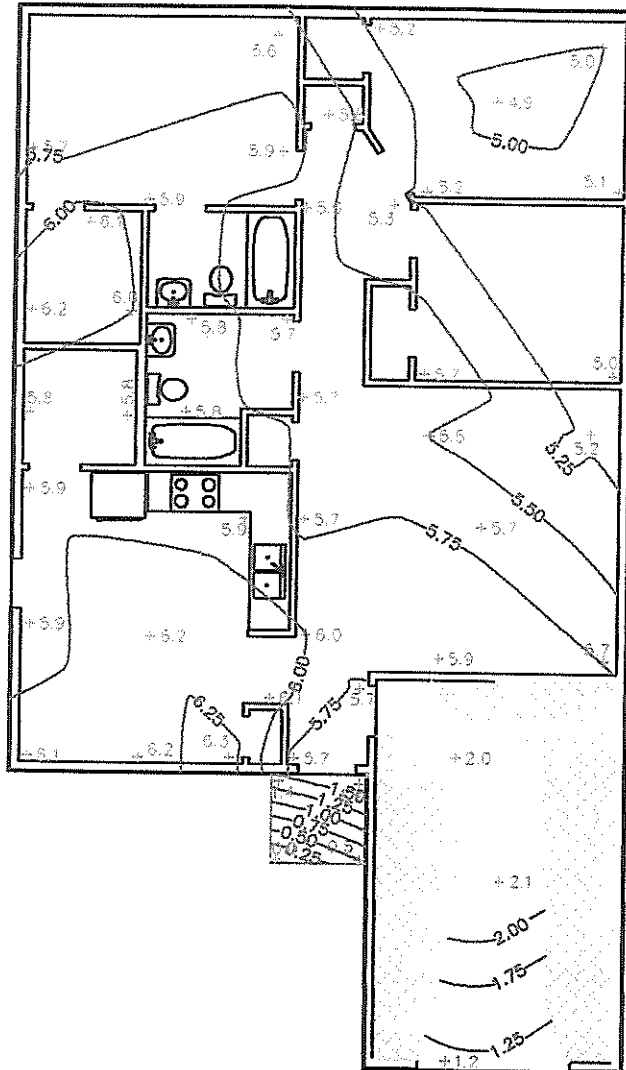
AccuTech Consultants, LLC
STRUCTURAL & FORENSIC ENGINEERING

SUBJECT: INTERIOR ELEVATIONS
PROJECT: 106 VILLA ARBOLES
BY: BDS PROJECT No.: CTR001-F
CHECK: JDF DATE: 04/25/07

SHEET
5
OF
APPENDIX B

NOTES:

1. ELEVATION SHOTS ARE IN INCHES.
2. CONTOURS SHOWN ARE AT 0.25 INCH INTERVALS.
3. FOUNDATION ELEVATIONS PRESENTED ON THIS DRAWING ARE BASED ON TOP OF FLOOR MEASUREMENTS WHICH HAVE BEEN ADJUSTED TO ACCOMMODATE MEASURED OR ASSUMED FLOOR FINISH THICKNESS.



□ - STORAGE

INTERIOR ELEVATIONS

SCALE: 1" = 10'



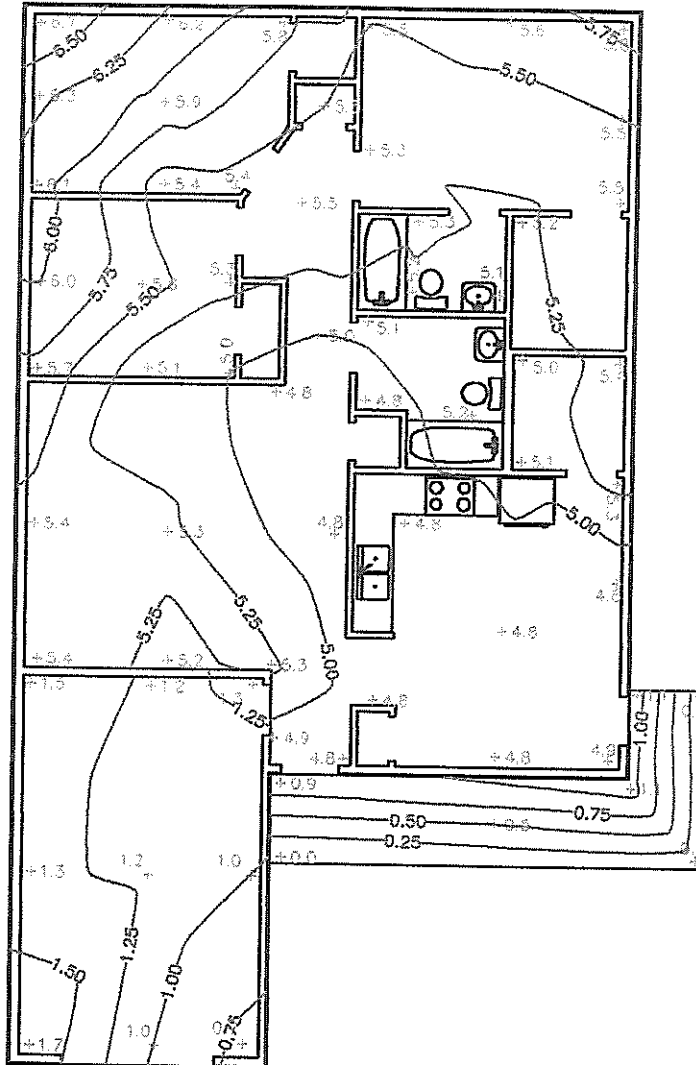
AccuTech Consultants, LLC
STRUCTURAL & FORENSIC ENGINEERING

SUBJECT: INTERIOR ELEVATIONS
 PROJECT: 107 VILLA ARBOLES
 BY: BDS PROJECT No.: CTR001-F
 CHECK: JDF DATE: 4/25/07

SHEET
6
OF
APPENDIX B

NOTES:

1. ELEVATION SHOTS ARE IN INCHES.
2. CONTOURS SHOWN ARE AT 0.25 INCH INTERVALS.
3. FOUNDATION ELEVATIONS PRESENTED ON THIS DRAWING ARE BASED ON TOP OF FLOOR MEASUREMENTS WHICH HAVE BEEN ADJUSTED TO ACCOMMODATE MEASURED OR ASSUMED FLOOR FINISH THICKNESS.



INTERIOR ELEVATIONS

SCALE: 1" = 10'



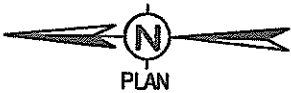
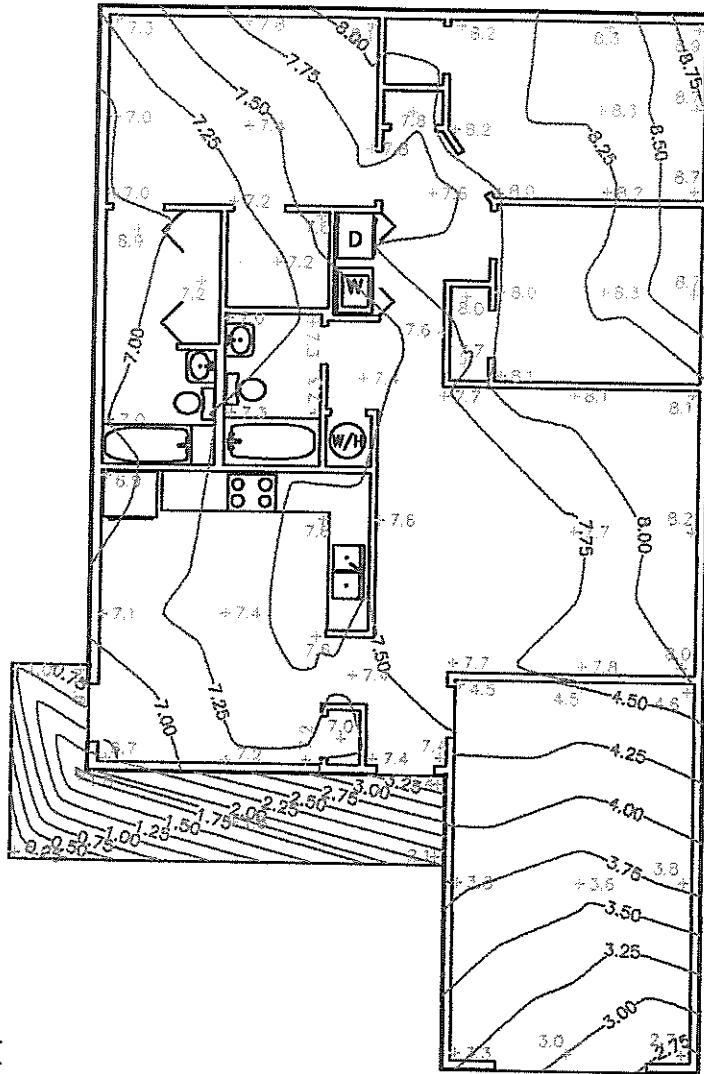
AccuTech Consultants, LLC
STRUCTURAL & FORENSIC ENGINEERING

SUBJECT: INTERIOR ELEVATIONS
PROJECT: 114 VILLA ARBOLES
BY: BDS PROJECT No.: CTR001-F
CHECK: JDF DATE: 5/23/07

SHEET
8
OF
APPENDIX B

NOTES:

1. ELEVATION SHOTS ARE IN INCHES.
2. CONTOURS SHOWN ARE AT 0.25 INCH INTERVALS.
3. FOUNDATION ELEVATIONS PRESENTED ON THIS DRAWING ARE BASED ON TOP OF FLOOR MEASUREMENTS WHICH HAVE BEEN ADJUSTED TO ACCOMMODATE MEASURED OR ASSUMED FLOOR FINISH THICKNESS.



INTERIOR ELEVATIONS

SCALE: 1" = 10'

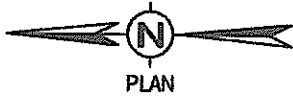
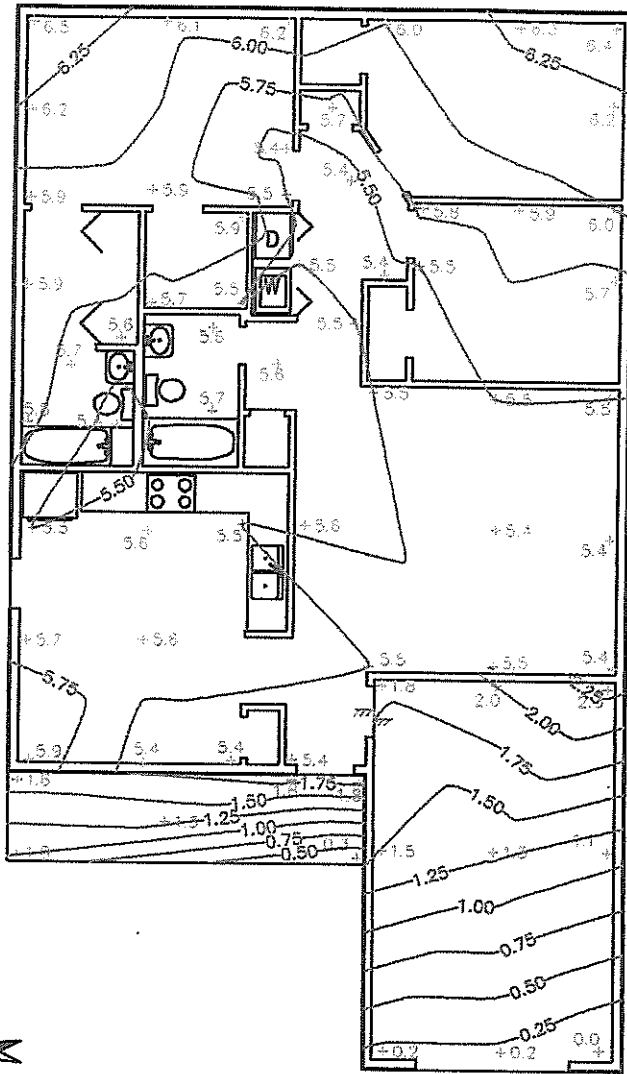
 **AccuTech Consultants, LLC**
STRUCTURAL & FORENSIC ENGINEERING

SUBJECT: INTERIOR ELEVATIONS
PROJECT: 126 VILLA ARBOLES
BY: BDS PROJECT No.: CTR001-F
CHECK: JDF DATE: 4/25/07

SHEET
9
OF
APPENDIX B

NOTES:

1. ELEVATION SHOTS ARE IN INCHES.
2. CONTOURS SHOWN ARE AT 0.25 INCH INTERVALS.
3. FOUNDATION ELEVATIONS PRESENTED ON THIS DRAWING ARE BASED ON TOP OF FLOOR MEASUREMENTS WHICH HAVE BEEN ADJUSTED TO ACCOMMODATE MEASURED OR ASSUMED FLOOR FINISH THICKNESS.



INTERIOR ELEVATIONS

SCALE: 1" = 10'



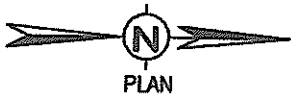
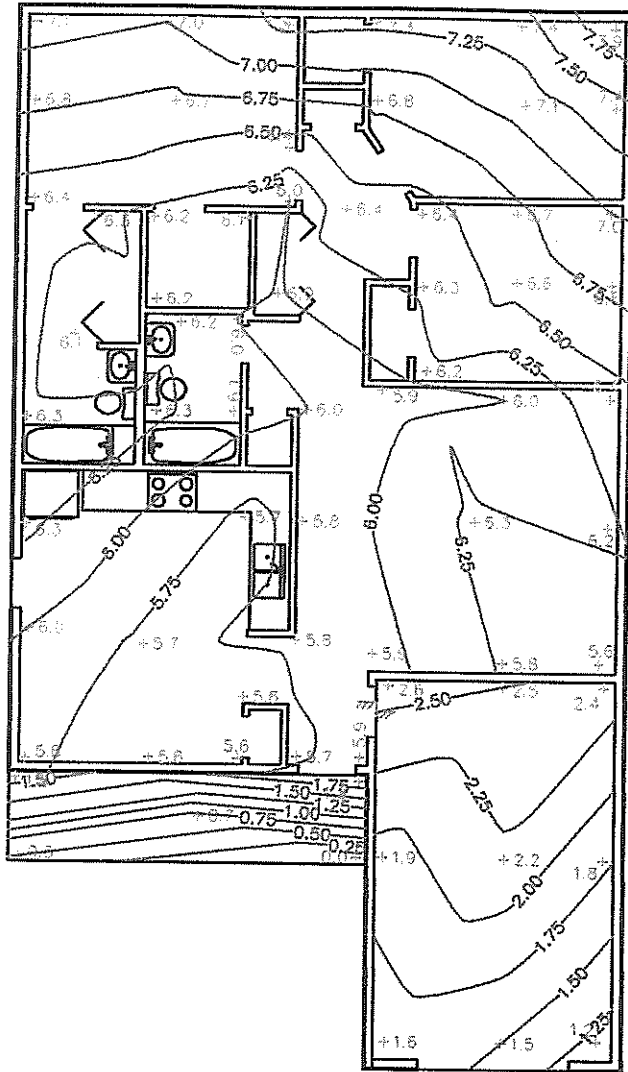
AccuTech Consultants, LLC
STRUCTURAL & FORENSIC ENGINEERING

SUBJECT: INTERIOR ELEVATIONS
PROJECT: 130 VILLA ARBOLES
BY: BDS PROJECT No.: CTR001-F
CHECK: JDF DATE: 4/25/07

SHEET
10
OF
APPENDIX B

NOTES:

1. ELEVATION SHOTS ARE IN INCHES.
2. CONTOURS SHOWN ARE AT 0.25 INCH INTERVALS.
3. FOUNDATION ELEVATIONS PRESENTED ON THIS DRAWING ARE BASED ON TOP OF FLOOR MEASUREMENTS WHICH HAVE BEEN ADJUSTED TO ACCOMMODATE MEASURED OR ASSUMED FLOOR FINISH THICKNESS.



INTERIOR ELEVATIONS

SCALE: 1" = 10'



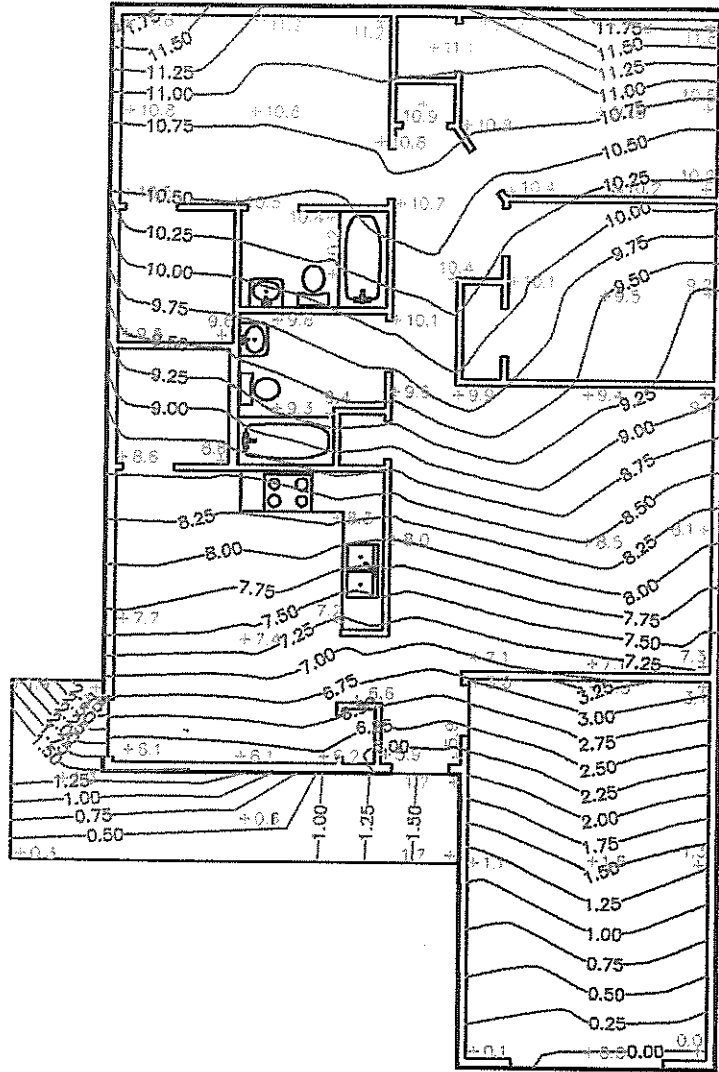
AccuTech Consultants, LLC
STRUCTURAL & FORENSIC ENGINEERING

SUBJECT: INTERIOR ELEVATIONS
PROJECT: 115 VILLA GRANDE
BY: BDS PROJECT No.: CTR001-F
CHECK: JDF DATE: 4/25/07

SHEET
12
OF
APPENDIX B

NOTES:

1. ELEVATION SHOTS ARE IN INCHES.
2. CONTOURS SHOWN ARE AT 0.25 INCH INTERVALS.
3. FOUNDATION ELEVATIONS PRESENTED ON THIS DRAWING ARE BASED ON TOP OF FLOOR MEASUREMENTS WHICH HAVE BEEN ADJUSTED TO ACCOMMODATE MEASURED OR ASSUMED FLOOR FINISH THICKNESS.



INTERIOR ELEVATIONS

SCALE: 1" = 10'

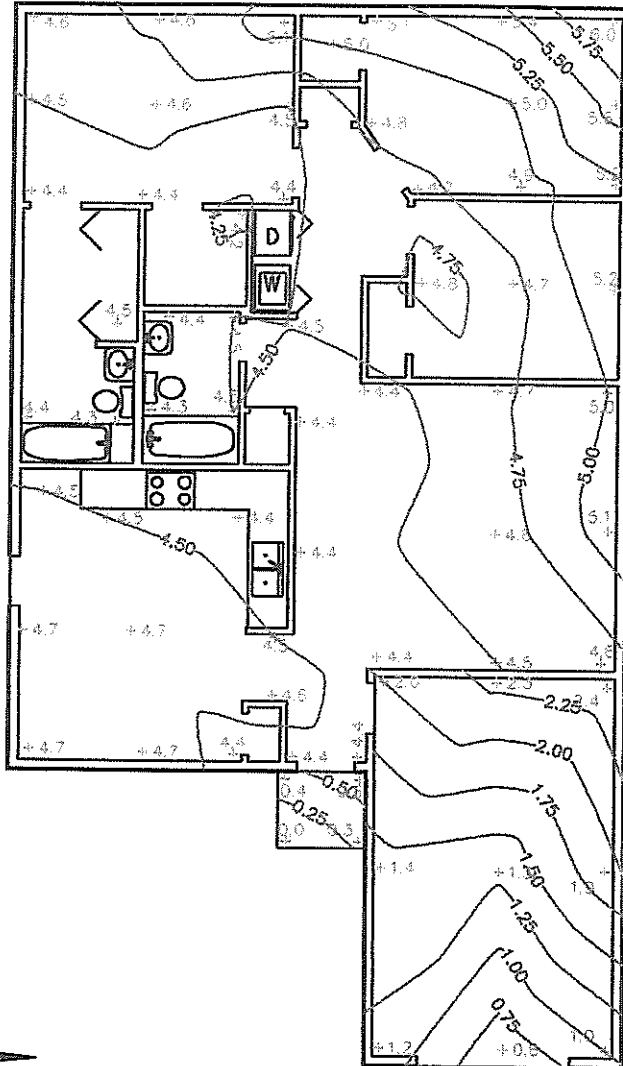
AccuTech Consultants, LLC
 STRUCTURAL & FORENSIC ENGINEERING

SUBJECT: INTERIOR ELEVATIONS
 PROJECT: 142 VILLA GRANDE
 BY: BDS PROJECT No.: CTR001-F
 CHECK: JDF DATE: 4/25/07

SHEET
14
 OF
 APPENDIX B

NOTES:

1. ELEVATION SHOTS ARE IN INCHES.
2. CONTOURS SHOWN ARE AT 0.25 INCH INTERVALS.
3. FOUNDATION ELEVATIONS PRESENTED ON THIS DRAWING ARE BASED ON TOP OF FLOOR MEASUREMENTS WHICH HAVE BEEN ADJUSTED TO ACCOMMODATE MEASURED OR ASSUMED FLOOR FINISH THICKNESS.



INTERIOR ELEVATIONS

SCALE: 1" = 10'

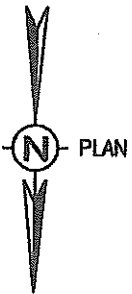
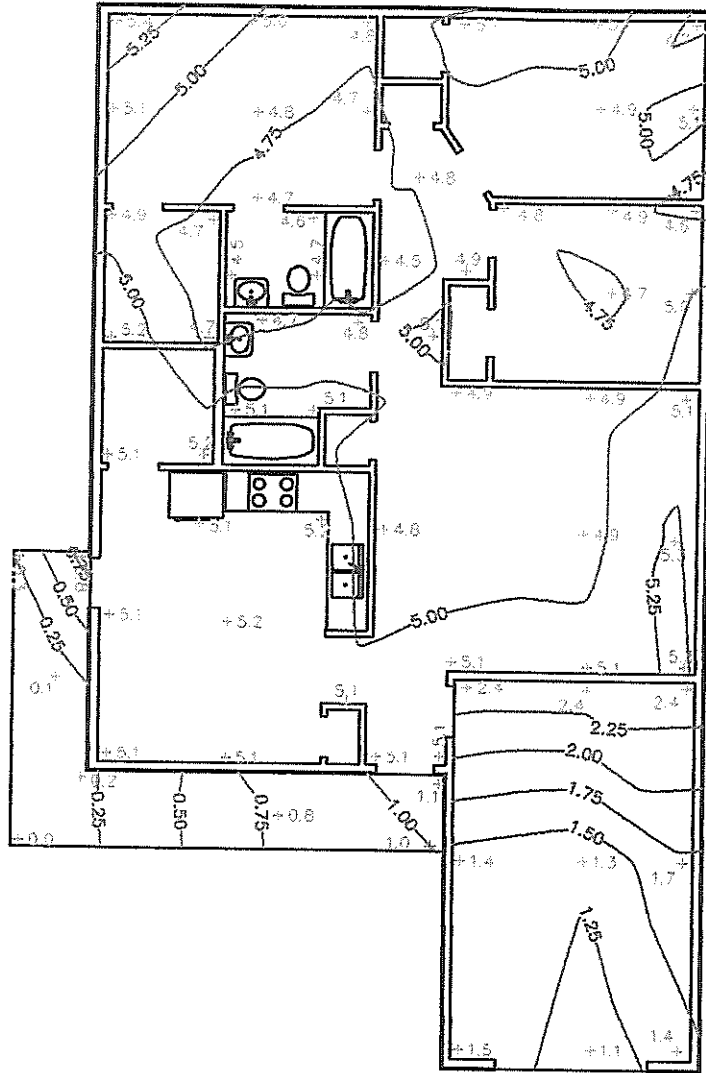
 **AccuTech Consultants, LLC**
STRUCTURAL & FORENSIC ENGINEERING

SUBJECT: INTERIOR ELEVATIONS
PROJECT: 602 VILLA LINDA
BY: BDS PROJECT No.: CTR001-F
CHECK: JDF DATE: 5/23/07

SHEET
15
OF
APPENDIX B

NOTES:

1. ELEVATION SHOTS ARE IN INCHES.
2. CONTOURS SHOWN ARE AT 0.25 INCH INTERVALS.
3. FOUNDATION ELEVATIONS PRESENTED ON THIS DRAWING ARE BASED ON TOP OF FLOOR MEASUREMENTS WHICH HAVE BEEN ADJUSTED TO ACCOMMODATE MEASURED OR ASSUMED FLOOR FINISH THICKNESS.



INTERIOR ELEVATIONS

SCALE: 1" = 10'

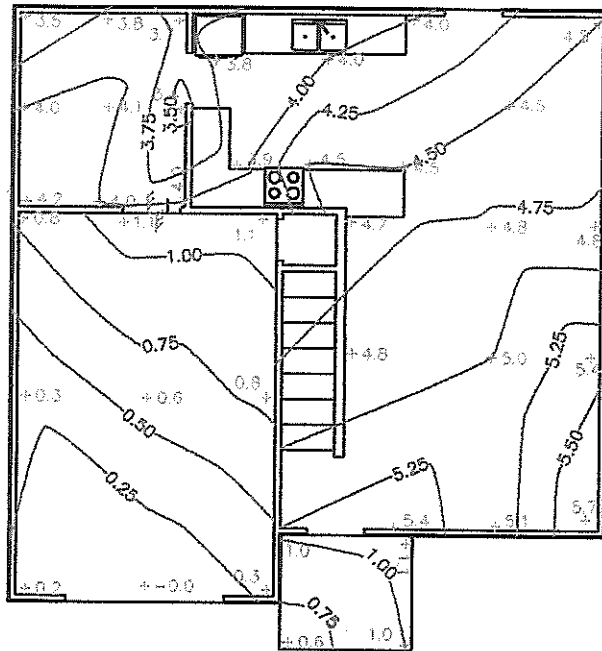
 **AccuTech Consultants, LLC**
STRUCTURAL & FORENSIC ENGINEERING

SUBJECT: INTERIOR ELEVATIONS
PROJECT: 607 VILLA LINDA
BY: BDS PROJECT No.: CTR001-F
CHECK: JDF DATE: 05/23/07

SHEET
16
OF
APPENDIX B

NOTES:

1. ELEVATION SHOTS ARE IN INCHES.
2. CONTOURS SHOWN ARE AT 0.25 INCH INTERVALS.
3. FOUNDATION ELEVATIONS PRESENTED ON THIS DRAWING ARE BASED ON TOP OF FLOOR MEASUREMENTS WHICH HAVE BEEN ADJUSTED TO ACCOMMODATE MEASURED OR ASSUMED FLOOR FINISH THICKNESS.



FIRST LEVEL INTERIOR ELEVATIONS

SCALE: 1" = 10'



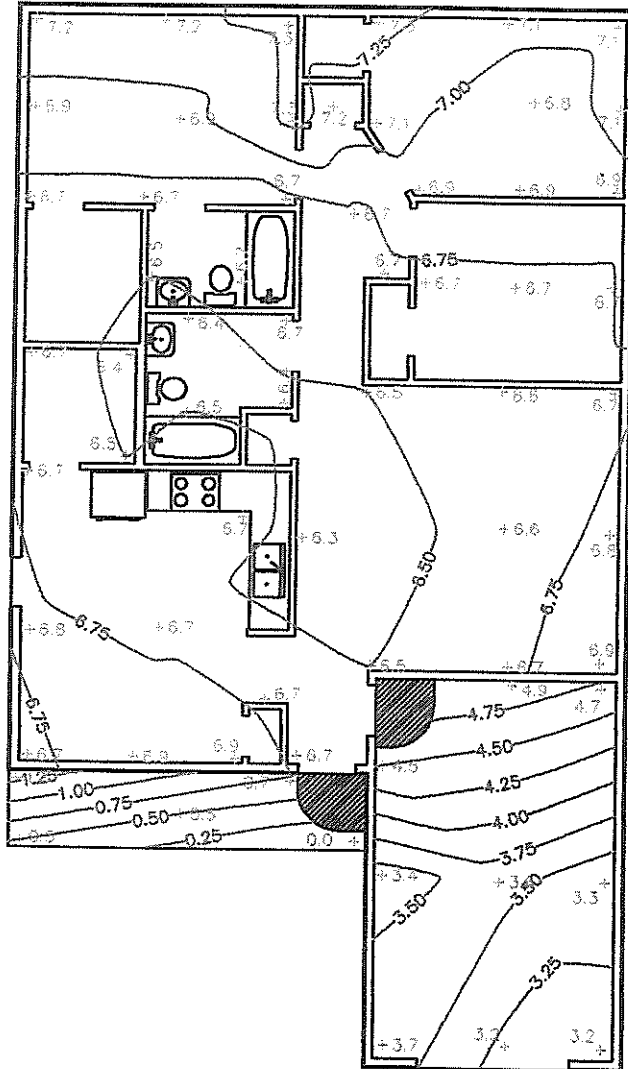
AccuTech Consultants, LLC
STRUCTURAL & FORENSIC ENGINEERING

SUBJECT: INTERIOR ELEVATIONS
PROJECT: 2607 VILLA NORTE
BY: BDS PROJECT No.: CTR001-F
CHECK: JDF DATE: 4/25/07

SHEET
17
OF
APPENDIX B

NOTES:

1. ELEVATION SHOTS ARE IN INCHES.
2. CONTOURS SHOWN ARE AT 0.25 INCH INTERVALS.
3. FOUNDATION ELEVATIONS PRESENTED ON THIS DRAWING ARE BASED ON TOP OF FLOOR MEASUREMENTS WHICH HAVE BEEN ADJUSTED TO ACCOMMODATE MEASURED OR ASSUMED FLOOR FINISH THICKNESS.



PLAN

▨ - RAMP

INTERIOR ELEVATIONS

SCALE: 1" = 10'



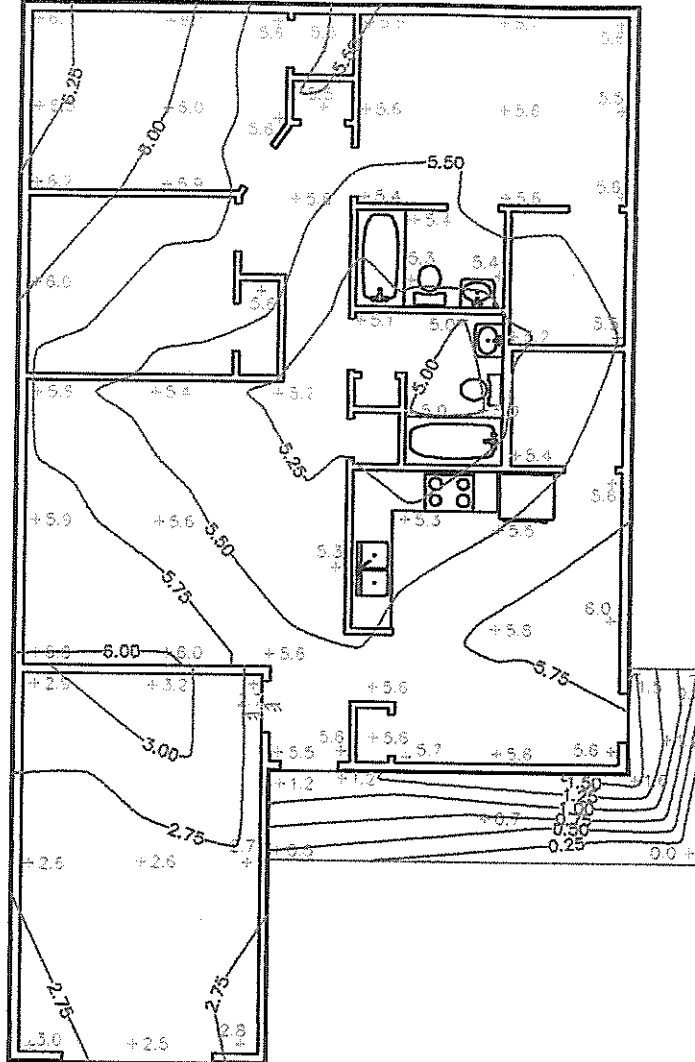
AccuTech Consultants, LLC
STRUCTURAL & FORENSIC ENGINEERING

SUBJECT: INTERIOR ELEVATIONS
 PROJECT: 2615 VILLA NORTE
 BY: BDS PROJECT No.: CTR001-F
 CHECK: JDF DATE: 5/28/07

SHEET
18
OF
APPENDIX B

NOTES:

1. ELEVATION SHOTS ARE IN INCHES.
2. CONTOURS SHOWN ARE AT 0.25 INCH INTERVALS.
3. FOUNDATION ELEVATIONS PRESENTED ON THIS DRAWING ARE BASED ON TOP OF FLOOR MEASUREMENTS WHICH HAVE BEEN ADJUSTED TO ACCOMMODATE MEASURED OR ASSUMED FLOOR FINISH THICKNESS.



INTERIOR ELEVATIONS

SCALE: 1" = 10'

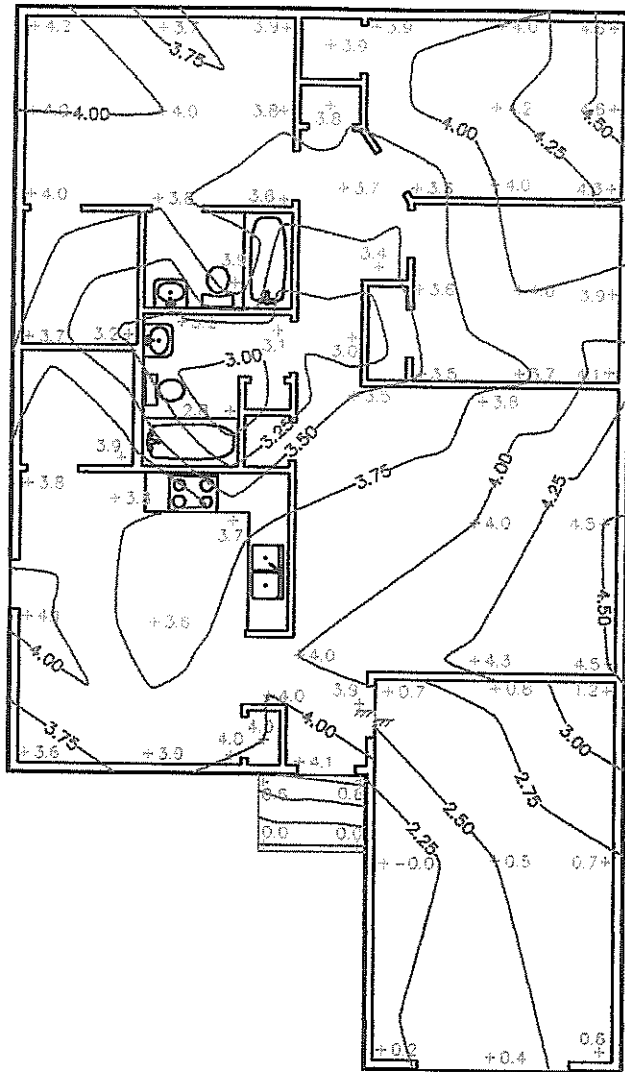
AccuTech **AccuTech Consultants, LLC**
STRUCTURAL & FORENSIC ENGINEERING

SUBJECT: INTERIOR ELEVATIONS
 PROJECT: 1502 VILLA FLORES
 BY: BDS PROJECT No.: CTR001-F
 CHECK: JDF DATE: 4/25/07

SHEET
19
OF
APPENDIX B

NOTES:

1. ELEVATION SHOTS ARE IN INCHES.
2. CONTOURS SHOWN ARE AT 0.25 INCH INTERVALS.
3. FOUNDATION ELEVATIONS PRESENTED ON THIS DRAWING ARE BASED ON TOP OF FLOOR MEASUREMENTS WHICH HAVE BEEN ADJUSTED TO ACCOMMODATE MEASURED OR ASSUMED FLOOR FINISH THICKNESS.



INTERIOR ELEVATIONS

SCALE: 1" = 10'

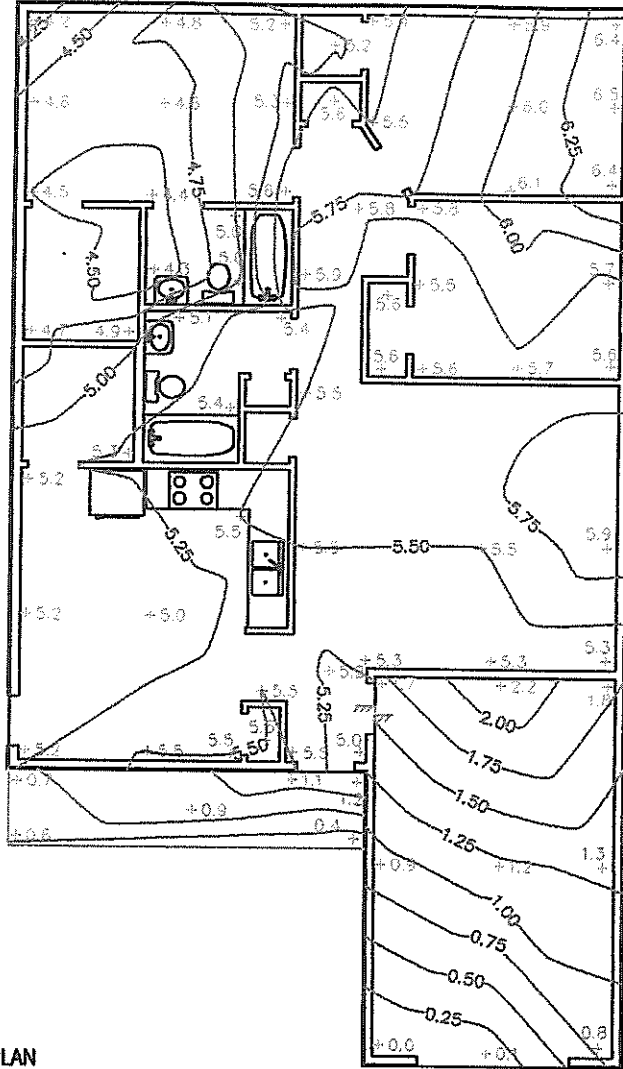
 **AccuTech Consultants, LLC**
STRUCTURAL & FORENSIC ENGINEERING

SUBJECT: INTERIOR ELEVATIONS
PROJECT: 1710 VILLA PLACE
BY: OET PROJECT No.: CTR001-F
CHECK: JDF DATE: 05/30/07

SHEET
22
OF
APPENDIX B

NOTES:

1. ELEVATION SHOTS ARE IN INCHES.
2. CONTOURS SHOWN ARE AT 0.25 INCH INTERVALS.
3. FOUNDATION ELEVATIONS PRESENTED ON THIS DRAWING ARE BASED ON TOP OF FLOOR MEASUREMENTS WHICH HAVE BEEN ADJUSTED TO ACCOMMODATE MEASURED OR ASSUMED FLOOR FINISH THICKNESS.



INTERIOR ELEVATIONS

SCALE: 1" = 10'



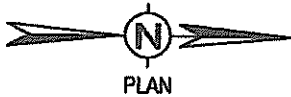
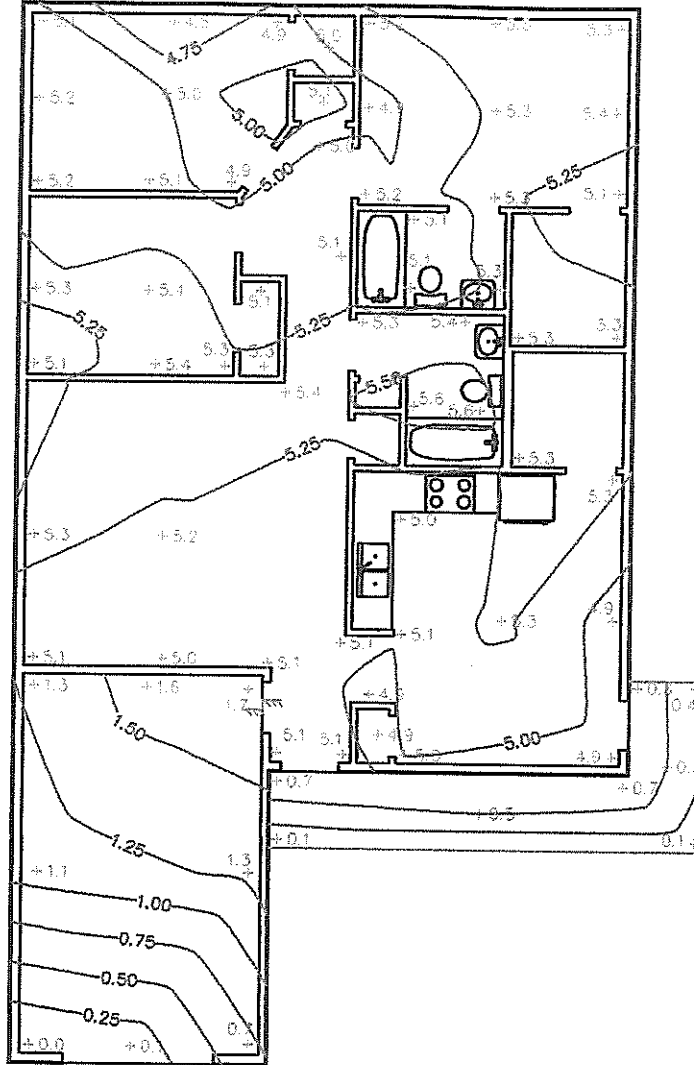
AccuTech Consultants, LLC
STRUCTURAL & FORENSIC ENGINEERING

SUBJECT: INTERIOR ELEVATIONS
PROJECT: 406 PRECIOUS
BY: OET PROJECT No.: CTR001-F
CHECK: JDF DATE: 05/29/07

SHEET
23
OF
APPENDIX B

NOTES:

1. ELEVATION SHOTS ARE IN INCHES.
2. CONTOURS SHOWN ARE AT 0.25 INCH INTERVALS.
3. FOUNDATION ELEVATIONS PRESENTED ON THIS DRAWING ARE BASED ON TOP OF FLOOR MEASUREMENTS WHICH HAVE BEEN ADJUSTED TO ACCOMMODATE MEASURED OR ASSUMED FLOOR FINISH THICKNESS.



INTERIOR ELEVATIONS

SCALE: 1" = 10'

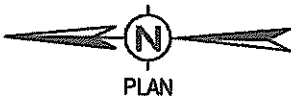
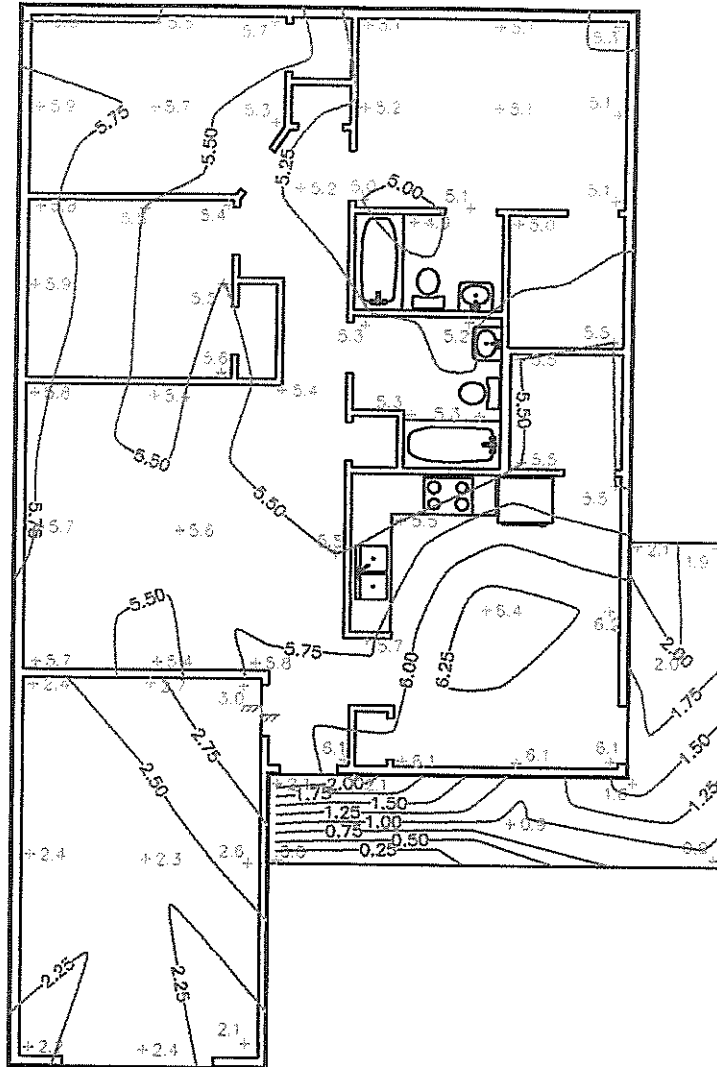
AccuTech Consultants, LLC
 STRUCTURAL & FORENSIC ENGINEERING

SUBJECT: INTERIOR ELEVATIONS
 PROJECT: 459 PRECIOUS
 BY: OET PROJECT No.: CTR001-F
 CHECK: JDF DATE: 05/29/07

SHEET
25
 OF
APPENDIX B

NOTES:

1. ELEVATION SHOTS ARE IN INCHES.
2. CONTOURS SHOWN ARE AT 0.25 INCH INTERVALS.
3. FOUNDATION ELEVATIONS PRESENTED ON THIS DRAWING ARE BASED ON TOP OF FLOOR MEASUREMENTS WHICH HAVE BEEN ADJUSTED TO ACCOMMODATE MEASURED OR ASSUMED FLOOR FINISH THICKNESS.



INTERIOR ELEVATIONS

SCALE: 1" = 10'



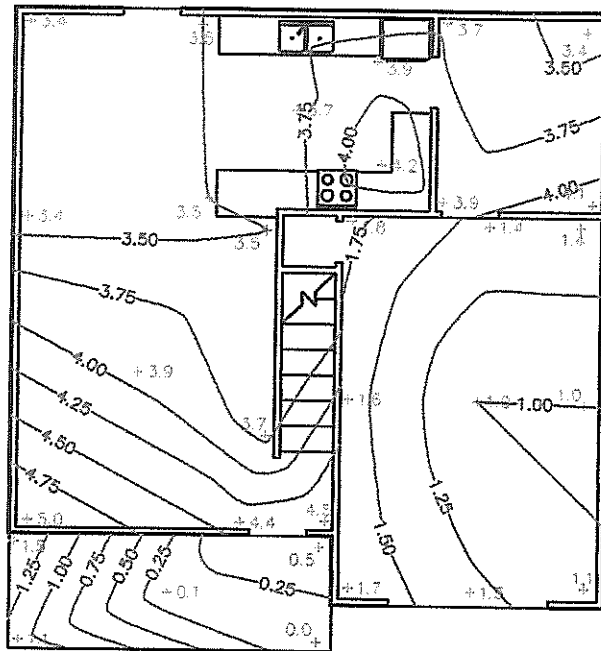
AccuTech Consultants, LLC
STRUCTURAL & FORENSIC ENGINEERING

SUBJECT: INTERIOR ELEVATIONS
 PROJECT: 466 PRECIOUS
 BY: BDS PROJECT No.: CTR001-F
 CHECK: JDF DATE: 4/25/07

SHEET
26
OF
APPENDIX B

NOTES:

1. ELEVATION SHOTS ARE IN INCHES.
2. CONTOURS SHOWN ARE AT 0.25 INCH INTERVALS.
3. FOUNDATION ELEVATIONS PRESENTED ON THIS DRAWING ARE BASED ON TOP OF FLOOR MEASUREMENTS WHICH HAVE BEEN ADJUSTED TO ACCOMMODATE MEASURED OR ASSUMED FLOOR FINISH THICKNESS.



INTERIOR ELEVATIONS

SCALE: 1" = 10'



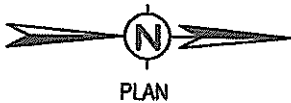
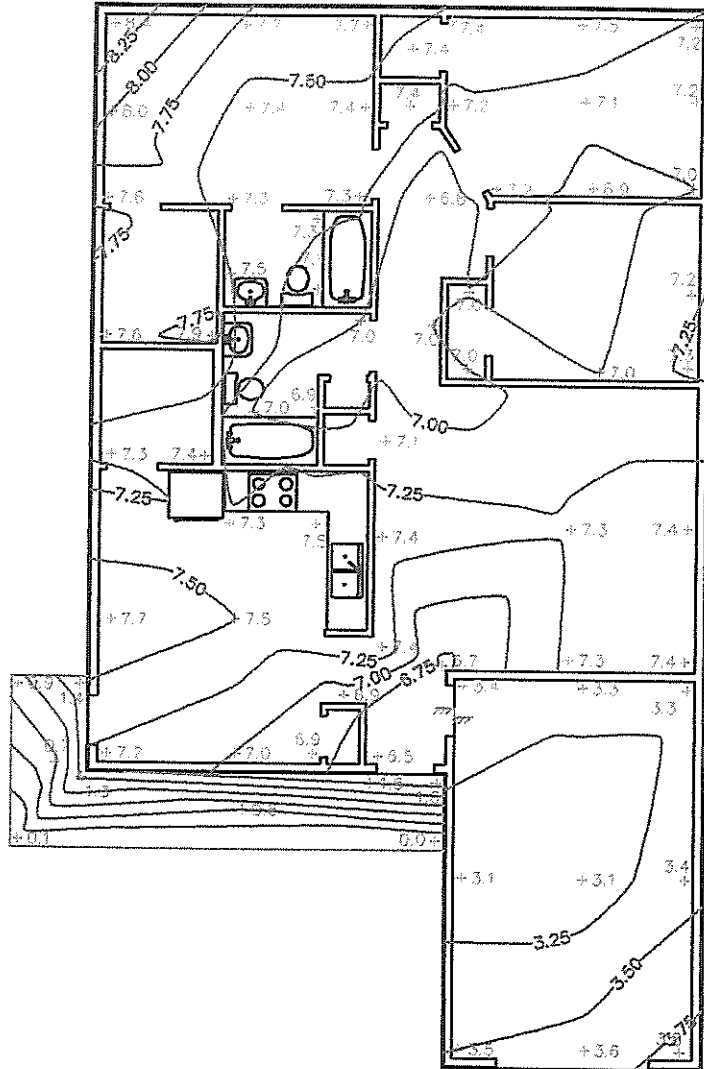
AccuTech Consultants, LLC
STRUCTURAL & FORENSIC ENGINEERING

SUBJECT: INTERIOR ELEVATIONS
PROJECT: 511 PRECIOUS
BY: BDS PROJECT No.: CTR001-F
CHECK: JDF DATE: 4/25/07

SHEET
27
OF
APPENDIX B

NOTES:

1. ELEVATION SHOTS ARE IN INCHES.
2. CONTOURS SHOWN ARE AT 0.25 INCH INTERVALS.
3. FOUNDATION ELEVATIONS PRESENTED ON THIS DRAWING ARE BASED ON TOP OF FLOOR MEASUREMENTS WHICH HAVE BEEN ADJUSTED TO ACCOMMODATE MEASURED OR ASSUMED FLOOR FINISH THICKNESS.



INTERIOR ELEVATIONS

SCALE: 1" = 10'



AccuTech Consultants, LLC
STRUCTURAL & FORENSIC ENGINEERING

SUBJECT: INTERIOR ELEVATIONS
PROJECT: 519 PRECIOUS
BY: BDS PROJECT No.: CTR001-F
CHECK: JDF DATE: 4/25/07

SHEET
28
OF
APPENDIX B

Appendix C

Assumptions and Limiting Conditions

ASSUMPTIONS AND LIMITING CONDITIONS

This report is subject to the following:

- I. Descriptions and conclusions are first impressions of the structures and have been based upon observed conditions at the time of our visit. AccuTech Consultants, LLC assumes no responsibility for any deficiencies not visible by external observation. There is the possibility that conditions may exist which are hidden from view, which could affect some of the conclusions contained herewith.
- II. Observations/discoveries identified in this report are representative of items noted during our investigation and should not be considered a comprehensive listing.
- III. Various information contained herein was received from third parties and no responsibility is assumed as to accuracy of same.
- IV. This report shall not be considered a detailed document to be used in securing bids or proposals to execute necessary repairs.
- V. This investigation does not include a detailed analytical study of the structural elements, nor does this report address the structural condition of framing members which are not exposed to view.
- VI. The opinions expressed in this report are limited to the matters expressly stated herein, and no opinions are implied, or should be inferred, beyond the matters stated.