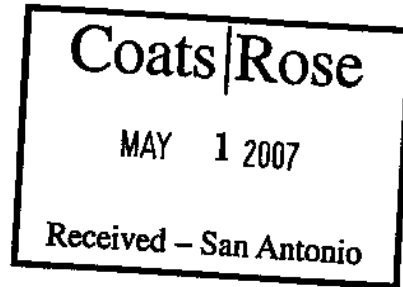




**AccuTech
Consultants, LLC**

April 30, 2007

Mr. Anthony Fetter
Coats | Rose
310 South St. Mary's Street, Suite 1460
San Antonio, Texas 78205



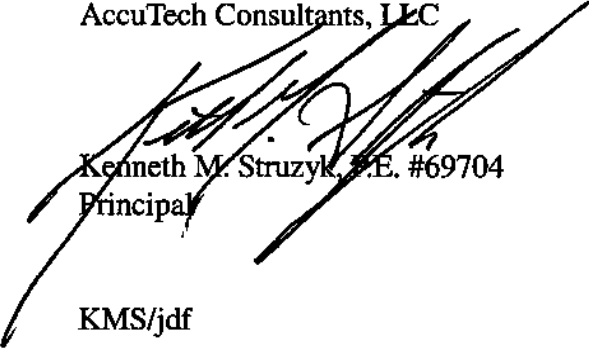
Reference: Mirasol Hope IV Revitalization Program
-Single Family Housing Design/Build Project

Dear Mr. Fetter:

Per your request, our office conducted a survey of the located at 514 Precious. Please find attached our drawings based on this survey. Additionally, we have attached our invoice for services in association with this project.

If you have any questions, please do not hesitate to contact our office.

Sincerely,
AccuTech Consultants, LLC



Kenneth M. Struzyk, P.E. #69704
Principal

KMS/jdf

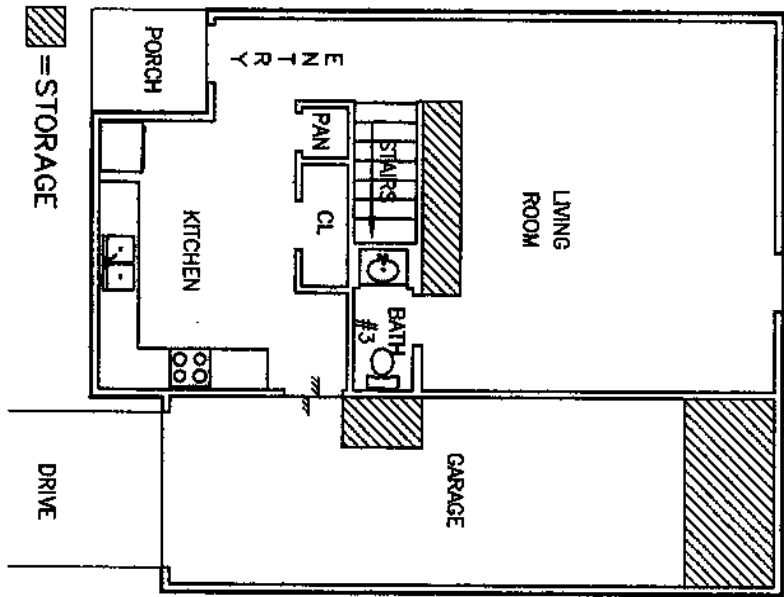
Attachments

Houston
480 N. Sam Houston Pkwy East, Suite 235
Houston, Texas 77060
Phone: (281) 445-5400
Fax: (281) 445-5417

San Antonio
909 N.E. Loop 410, Suite 900
San Antonio, Texas 78209
Phone: (210) 930-5355
Fax: (210) 930-5460

FIRST LEVEL FLOOR PLAN

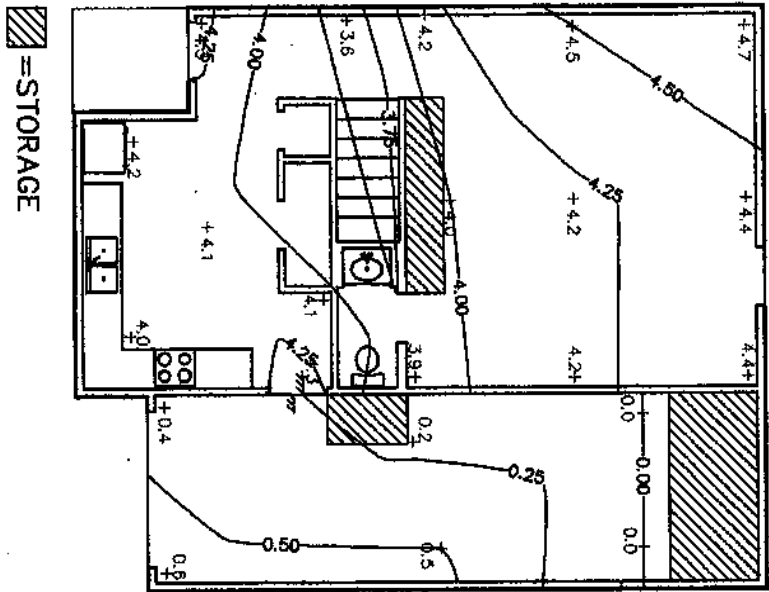
SCALE : 1" = 10'



NOTES:

1. ELEVATION SHOTS ARE IN INCHES.
2. CONTOURS SHOWN ARE AT 0.25 INCH INTERVALS.
3. FOUNDATION ELEVATIONS PRESENTED ON THIS DRAWING ARE BASED ON TOP OF FLOOR MEASUREMENTS WHICH HAVE BEEN ADJUSTED TO ACCOMMODATE MEASURED OR ASSUMED

- NOTES:
1. ELEVATION SHOTS ARE IN INCHES.
 2. CONTOURS SHOWN ARE AT 0.25 INCH INTERVALS.
 3. FOUNDATION ELEVATIONS PRESENTED ON THIS DRAWING ARE BASED ON TOP OF FLOOR MEASUREMENTS WHICH HAVE BEEN ADJUSTED TO ACCOMMODATE MEASURED OR ASSUMED FLOOR FINISH THICKNESS.



FIRST LEVEL INTERIOR ELEVATIONS

SCALE : 1" = 10'

