



818 S. FLORES ST. ① SAN ANTONIO, TEXAS 78204 ① www.saha.org

Procurement Department

ADDENDUM #2

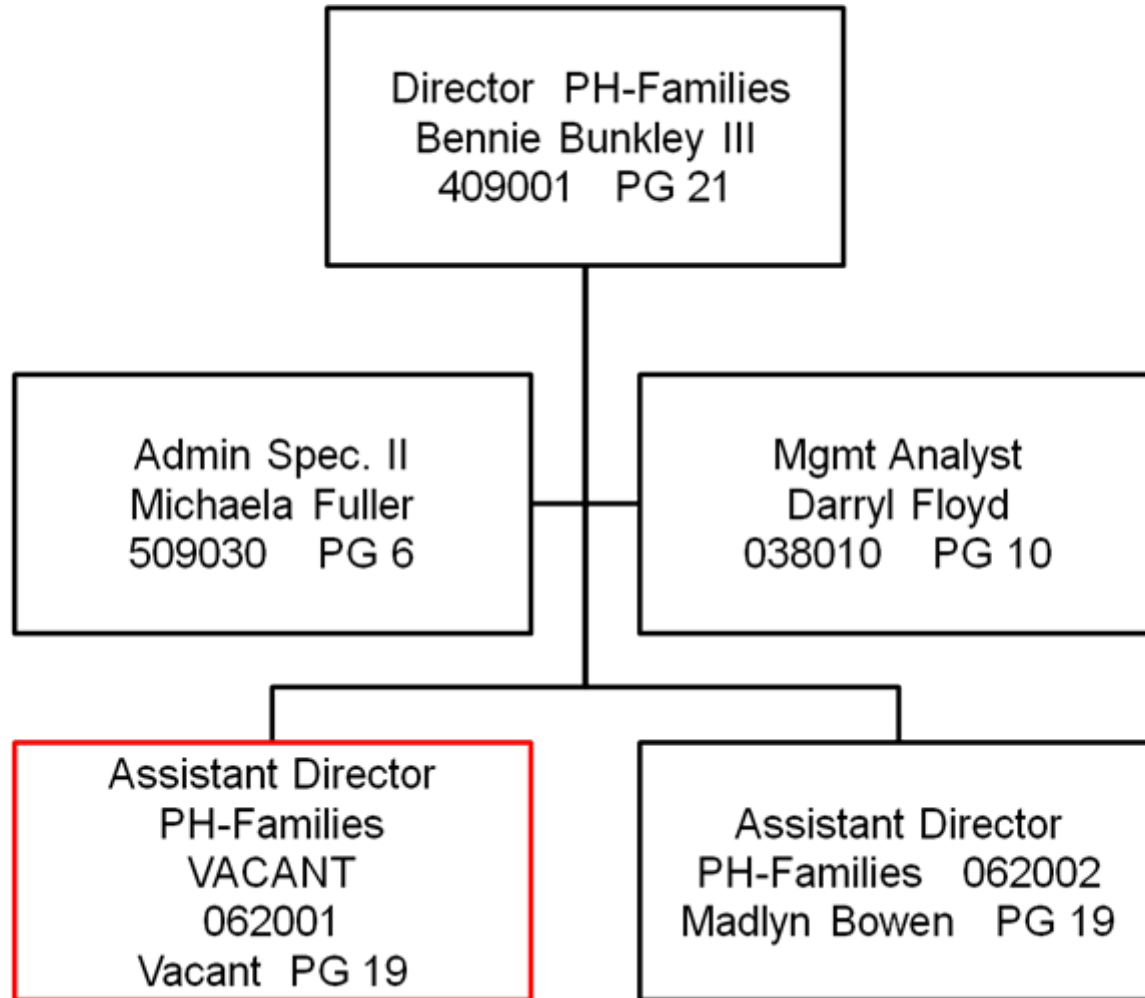
To: RFQ# 1110-918-38-3653
RFQ: Consulting and Training Services-Public Housing
Date: October 28, 2011

- Question 1: How many students are anticipated in each session?**
Answer 1: The number of students will depend on availability and work load at the time the sessions are scheduled.
- Question 2: Is it possible to get an organizational chart so we can better estimate the number of interviews and documents necessary to perform this effort.**
Answer 2: The organizational chart is attached.
- Question 3: Can our company bid on the Training Services only, or do we have to provide all task included in the scope of work?**
Answer 3: All bids must include all tasks in the scope of work.
- Question 4: Our company has provided technical assistance for other companies and organizations but not specifically for other housing authorities, would we still be eligible to respond to your procurement?**
Answer 4: Anyone can bid on our solicitations. The award will be determined by the criteria set forth in the RFQ.

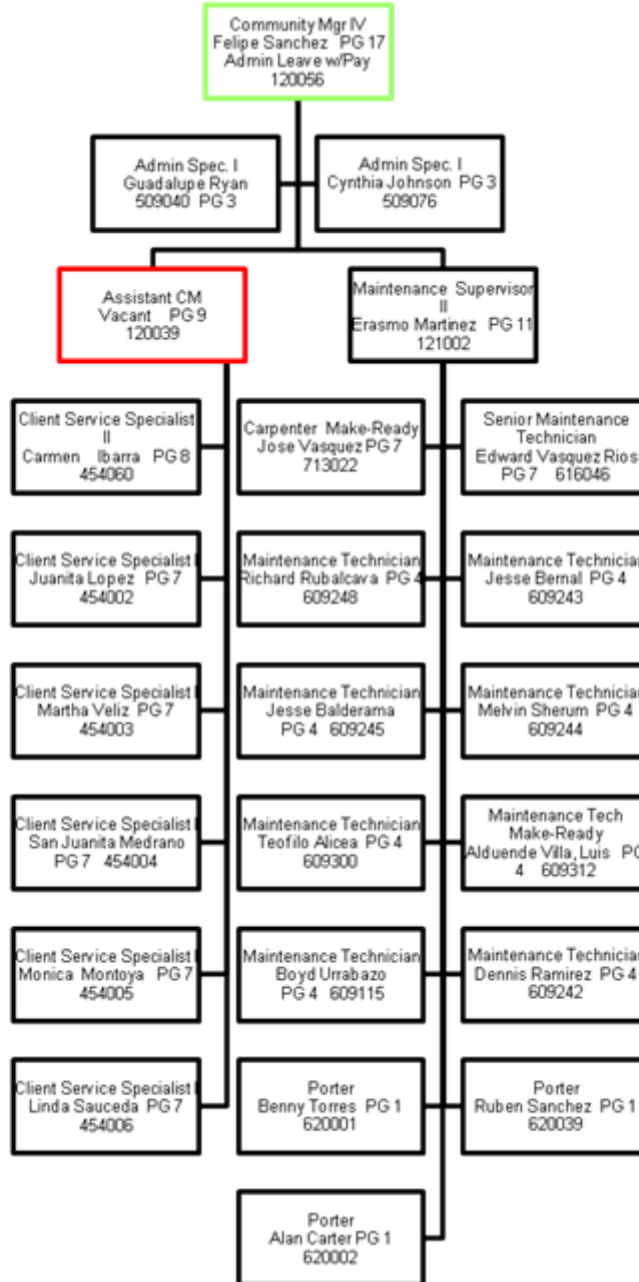
By: Carl Bottoms
Procurement Supervisor

Date: October 28, 2011

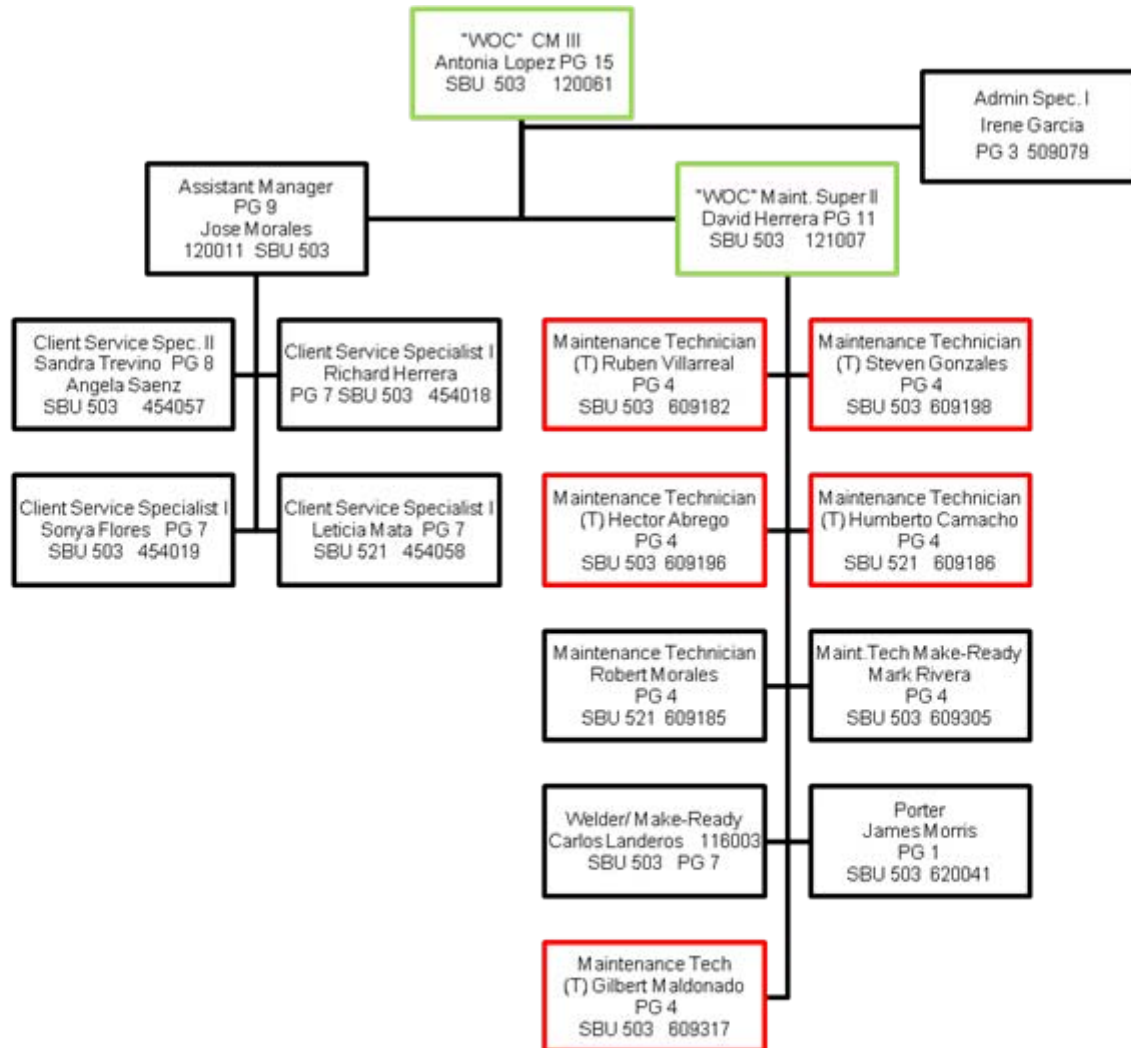
Public Housing- Families



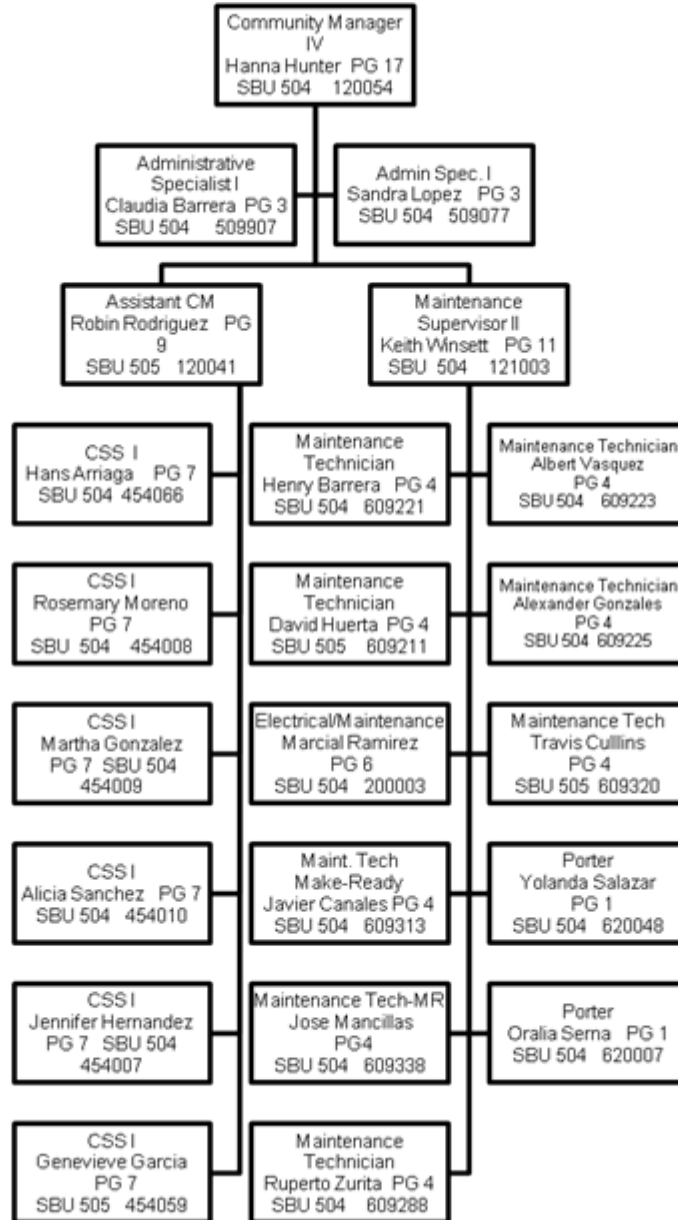
Alazan-501



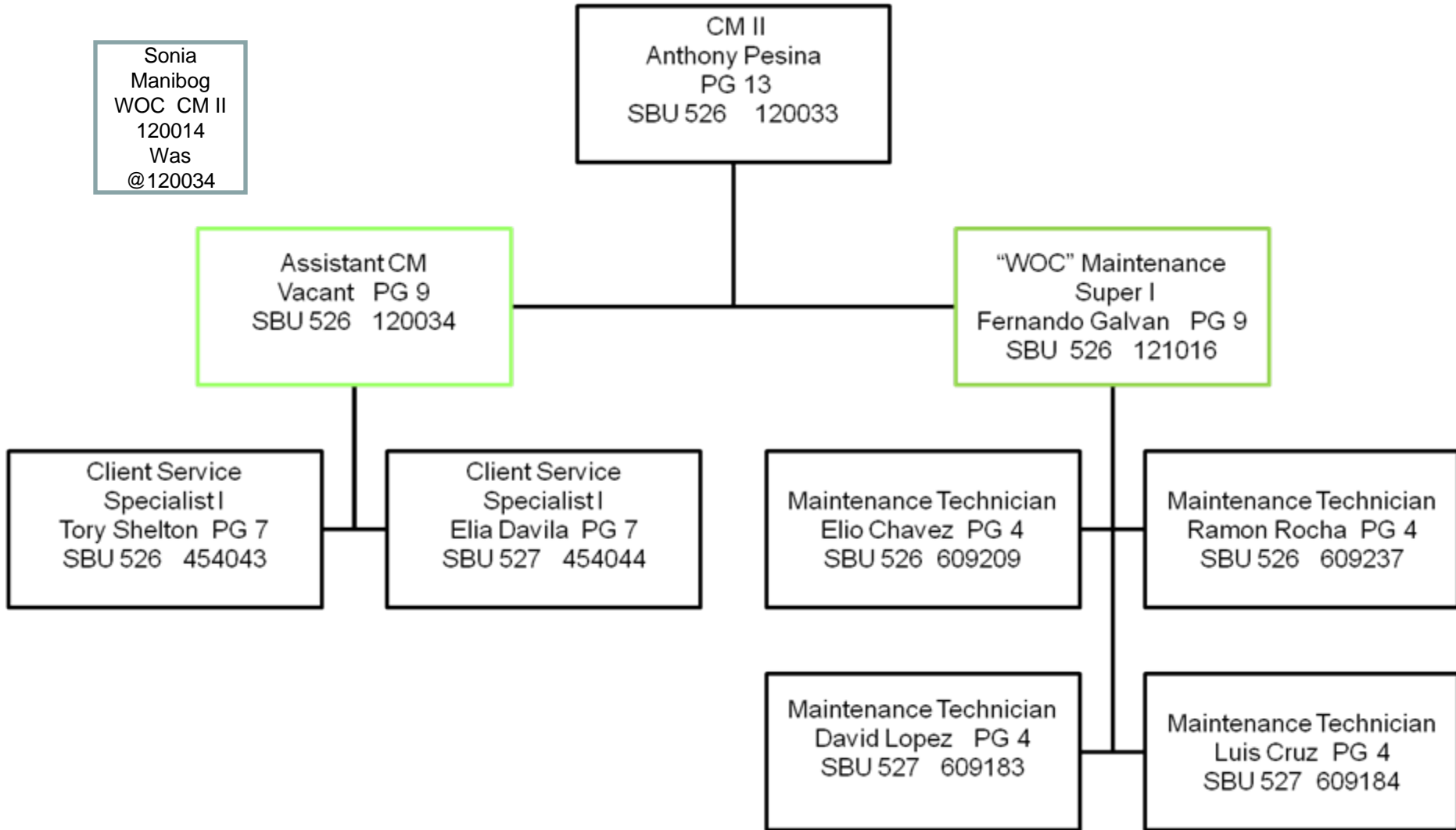
Lincoln-503; T.L. Shaley/Cheryl West-521



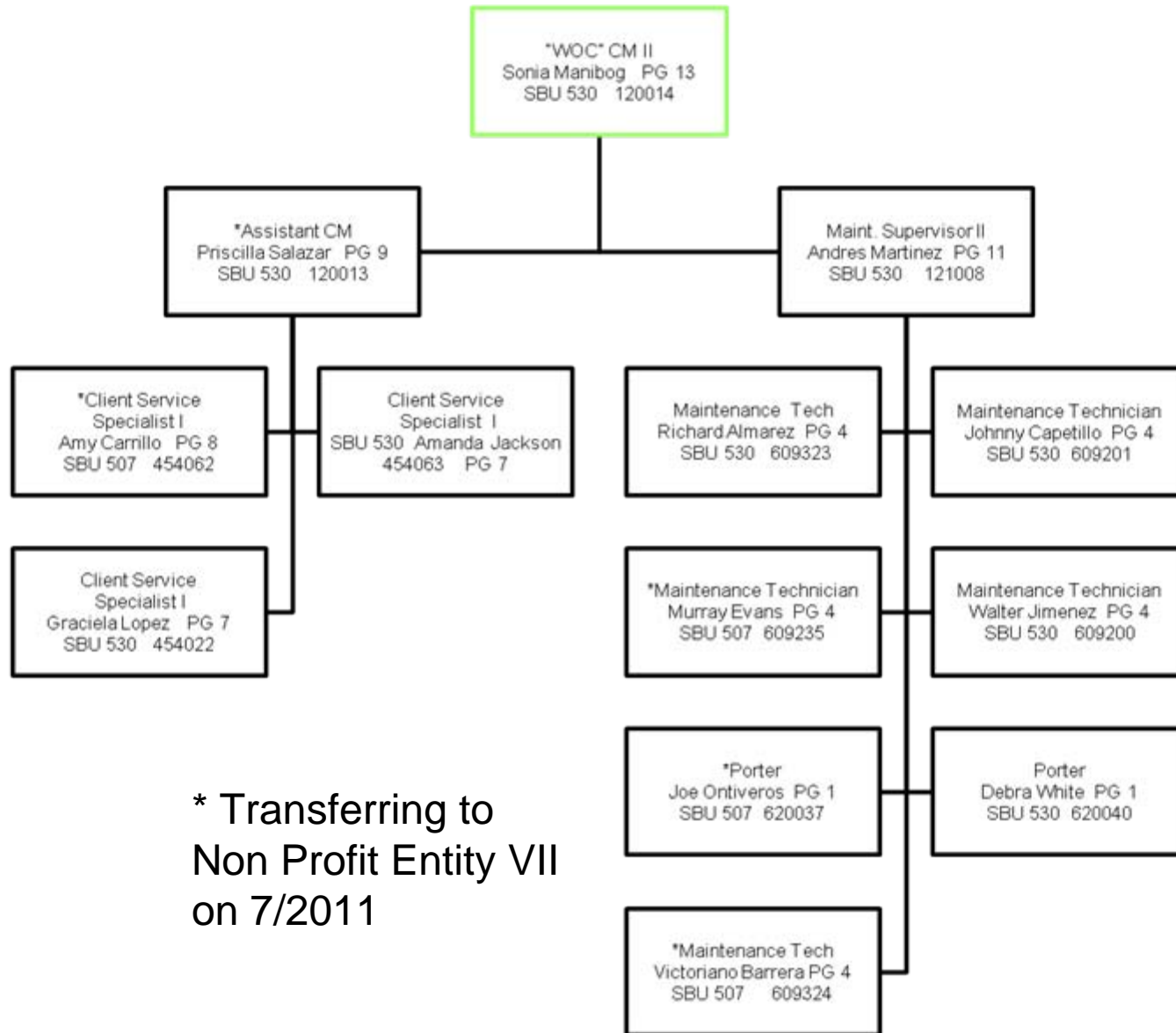
Cassiano-504 /San Juan-505



Westway-526, Charles Andrews-527 /FF-527/PO



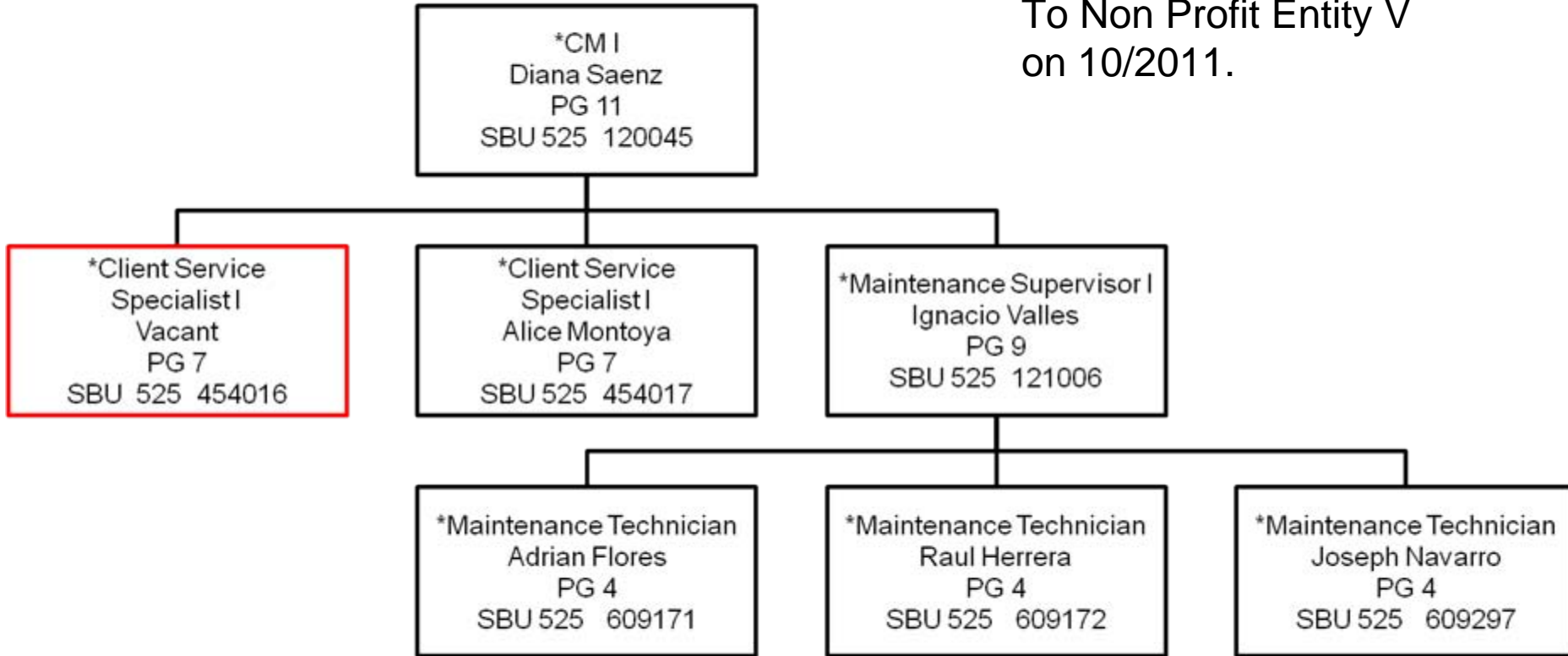
Mirasol-530, SF/PL/BR/VF 87-536 Villa Veramendi-507



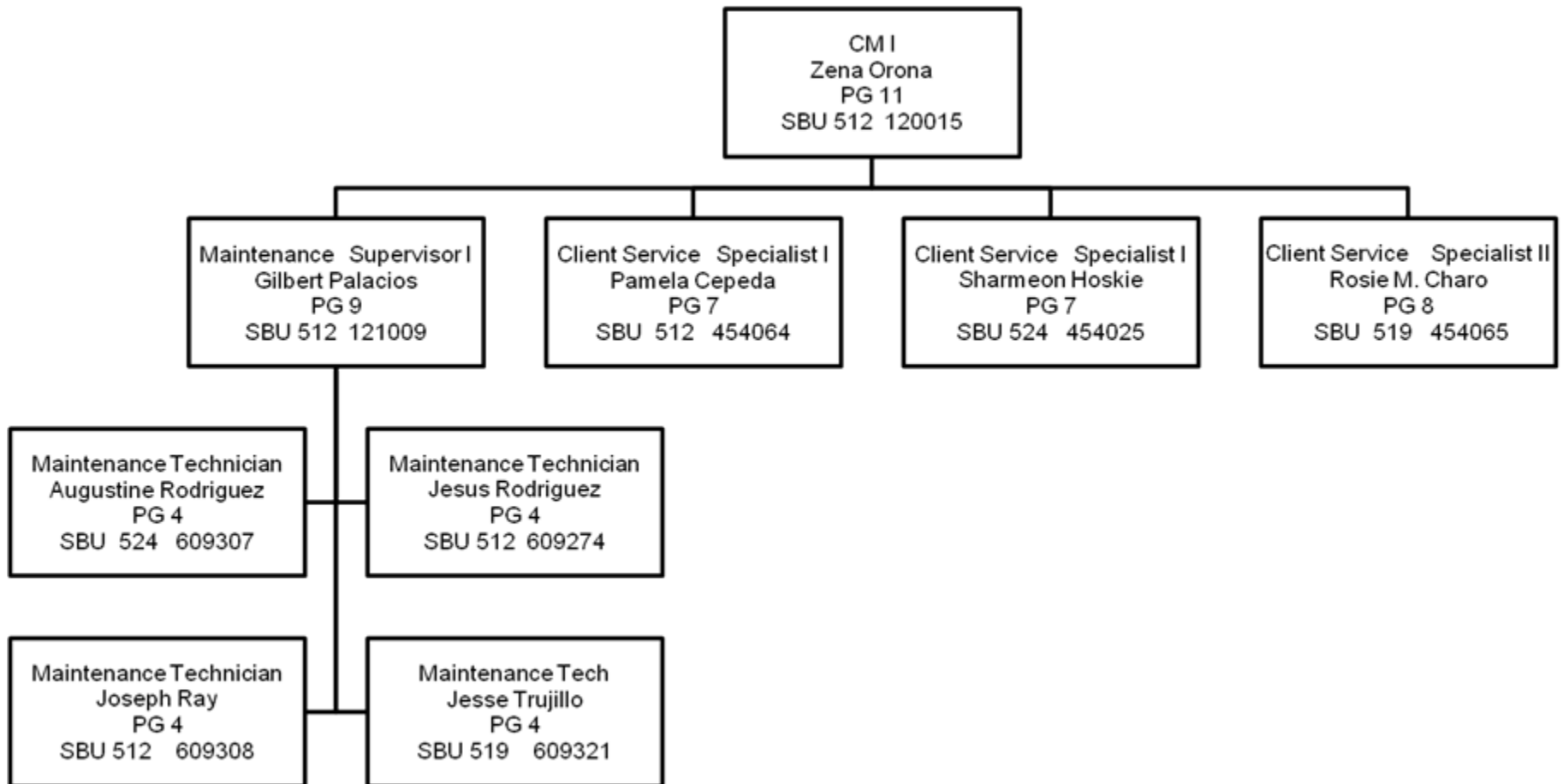
* Transferring to
Non Profit Entity VII
on 7/2011

CC/Beldon/Rutledge-525

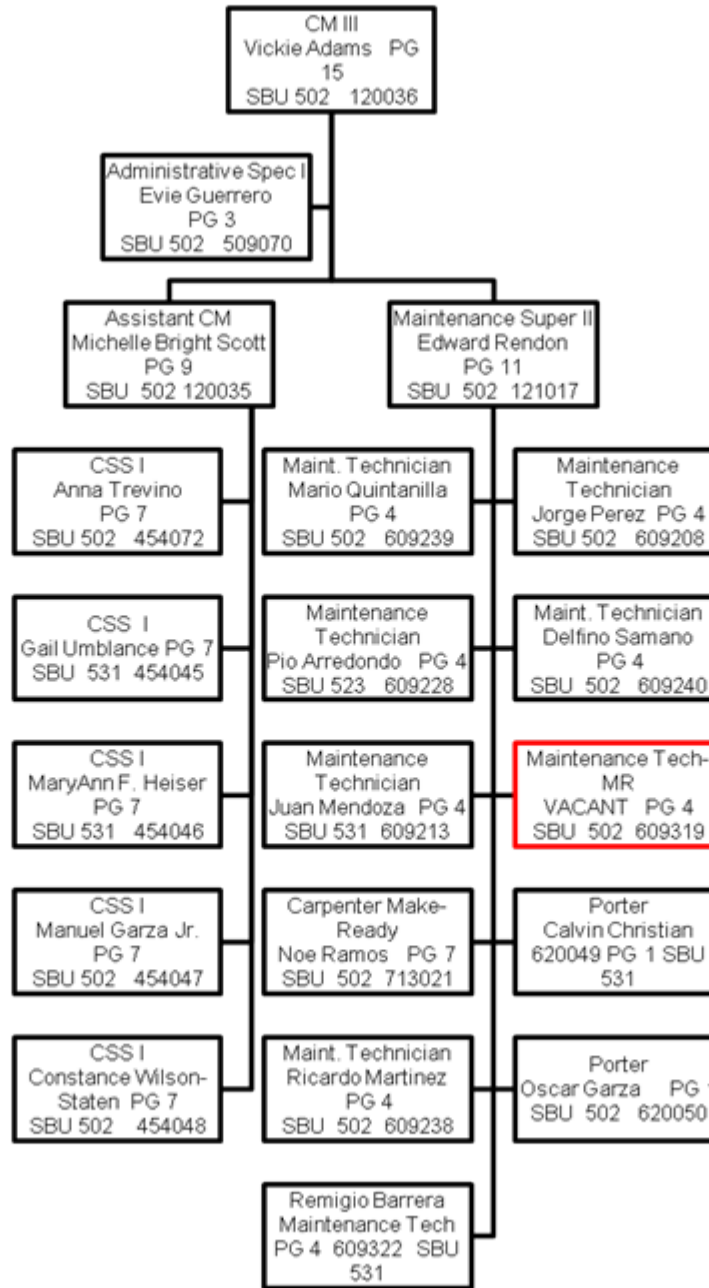
*ALL Positions transferring
To Non Profit Entity V
on 10/2011.



Mission-512 ,Riverside-519, Highview-524

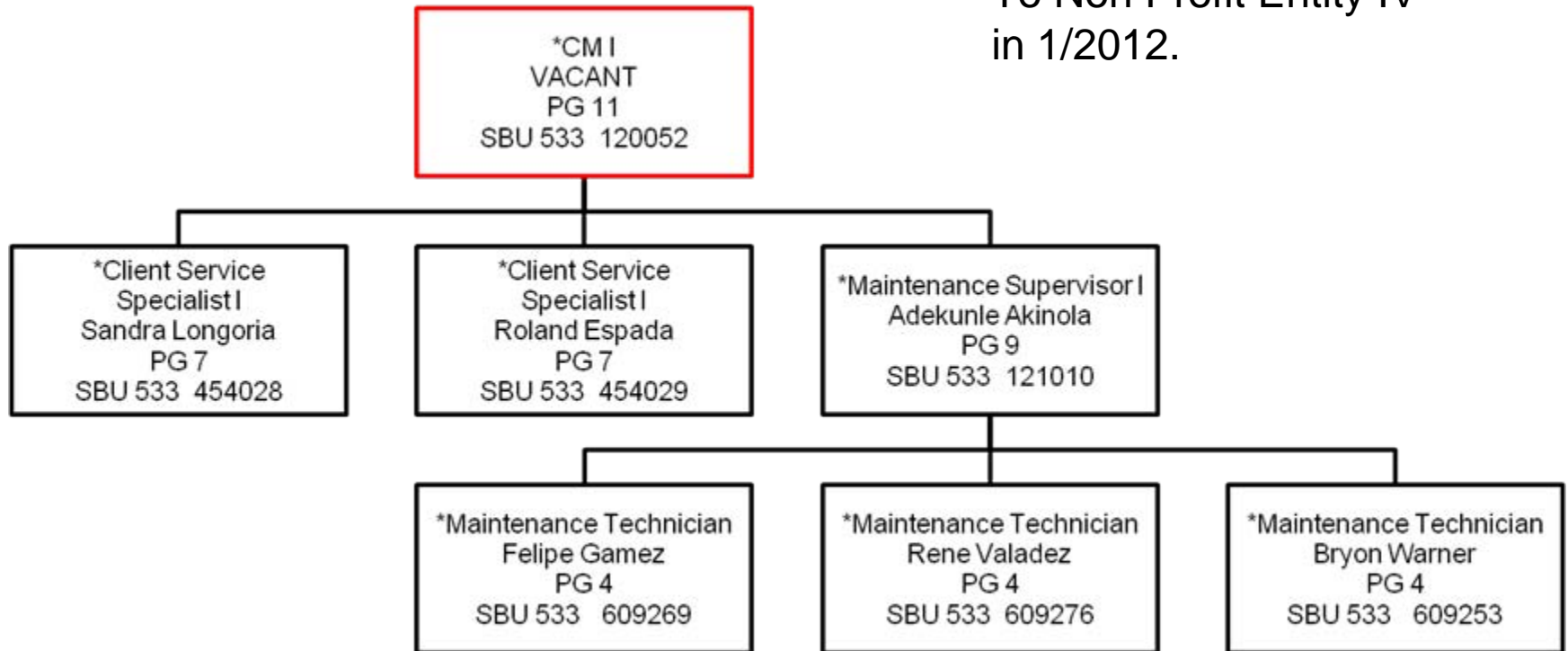


Wheatley/VE/Olive Pk- 502, Springview-531 Kenwood/Park Square-523



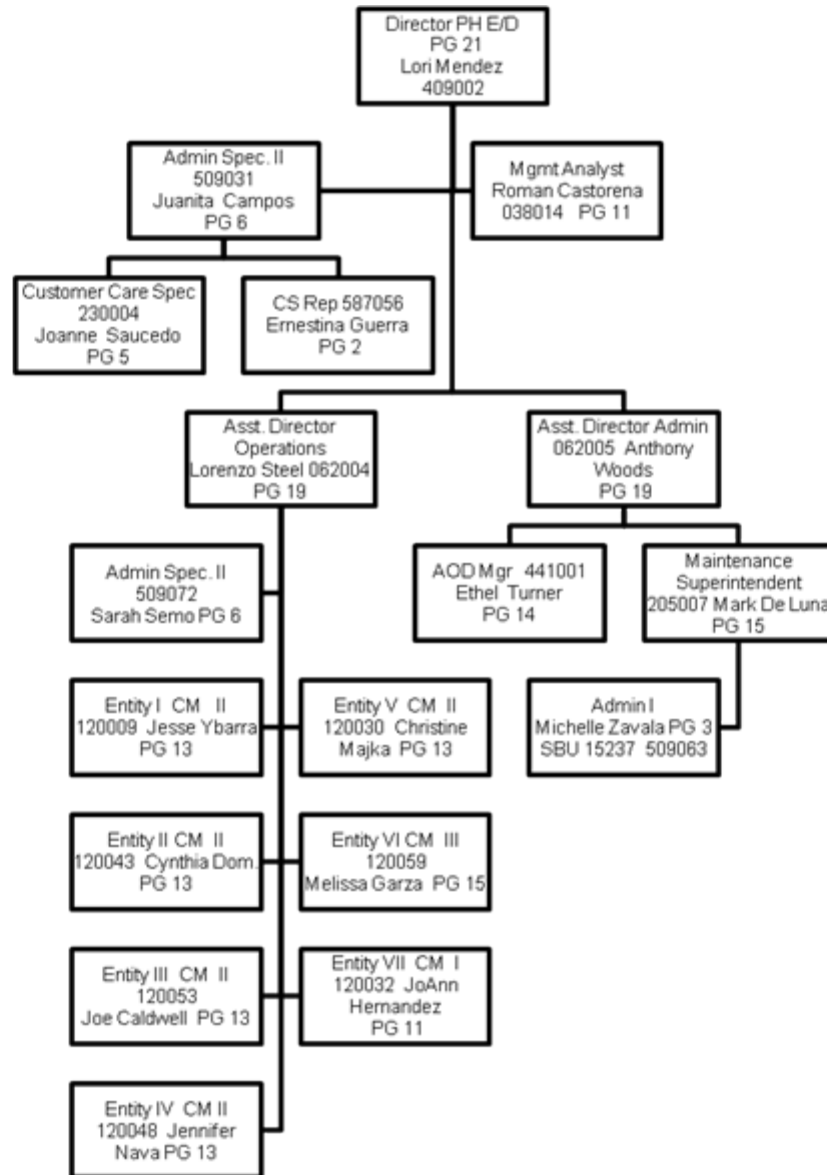
Scattered Sites-533

*All positions transferring
To Non Profit Entity IV
in 1/2012.



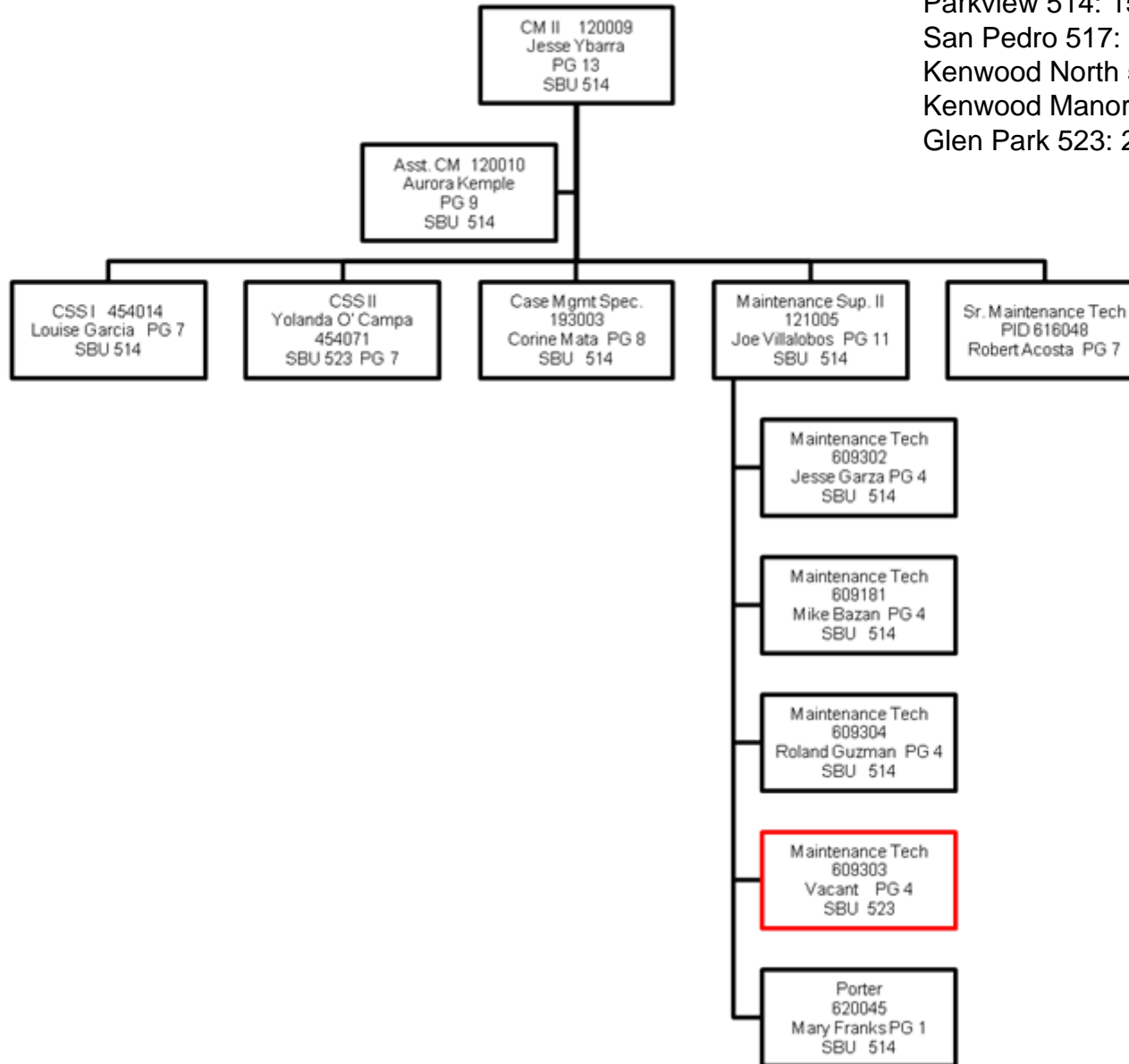
Public Housing for Elderly and Disabled

Last Update: 9.15.2011 KBM



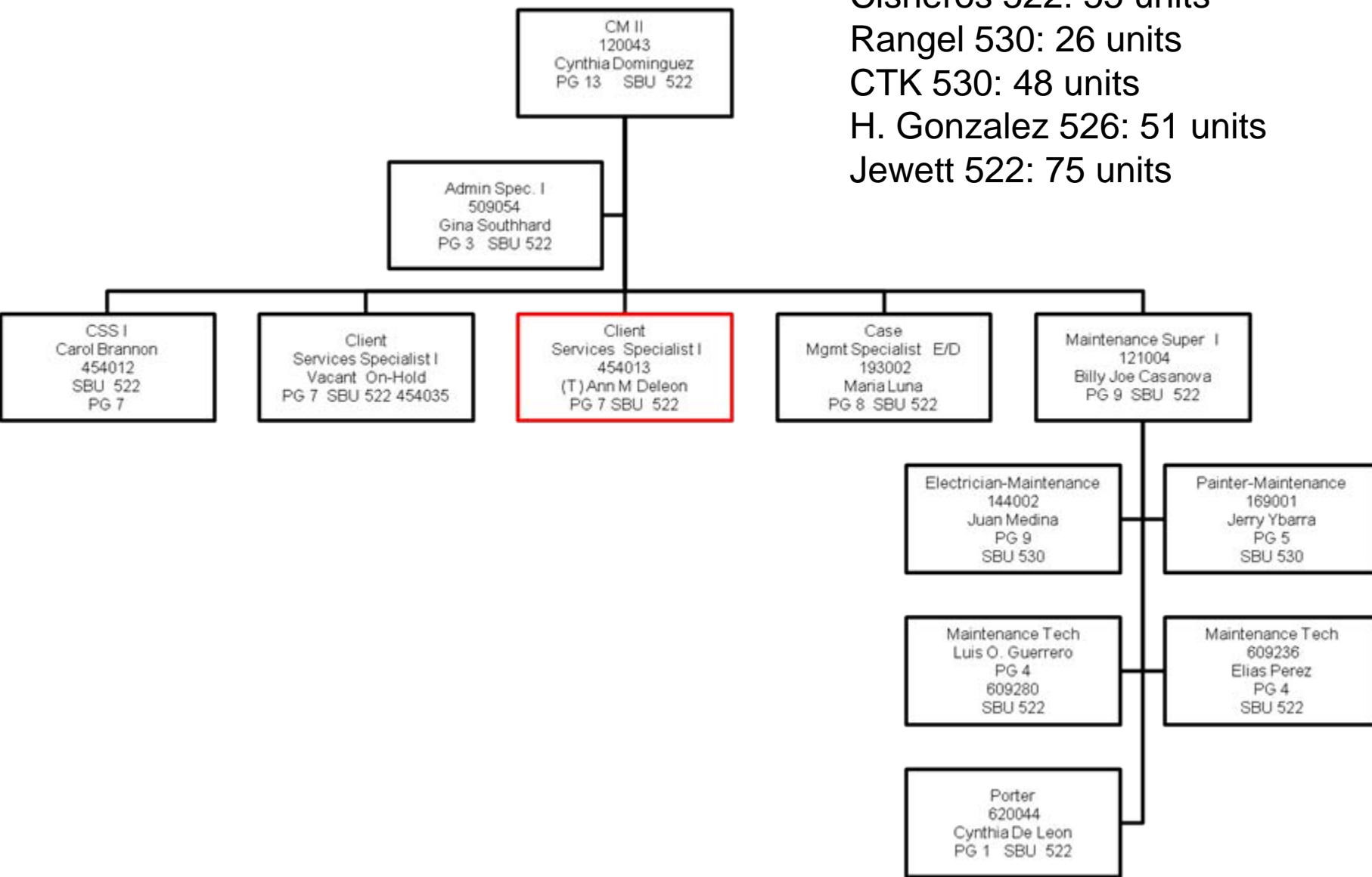
Entity I (335 units)

College Pk 514: 78 units
Parkview 514: 153 units
San Pedro 517: 16 units
Kenwood North 523: 53 units
Kenwood Manor 523: 9 units
Glen Park 523: 26 units

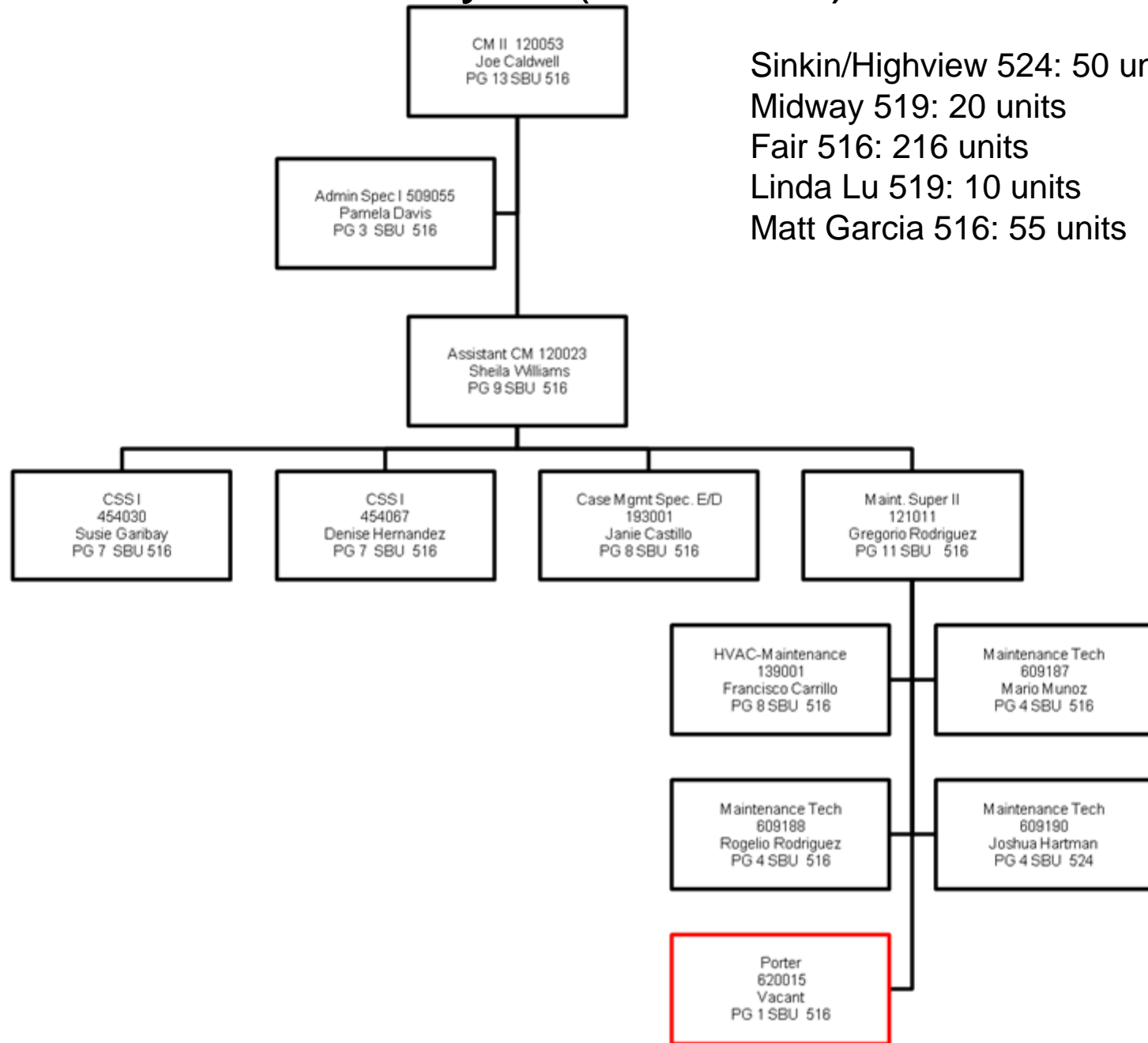


Entity II (255 Units)

Cisneros 522: 55 units
Rangel 530: 26 units
CTK 530: 48 units
H. Gonzalez 526: 51 units
Jewett 522: 75 units



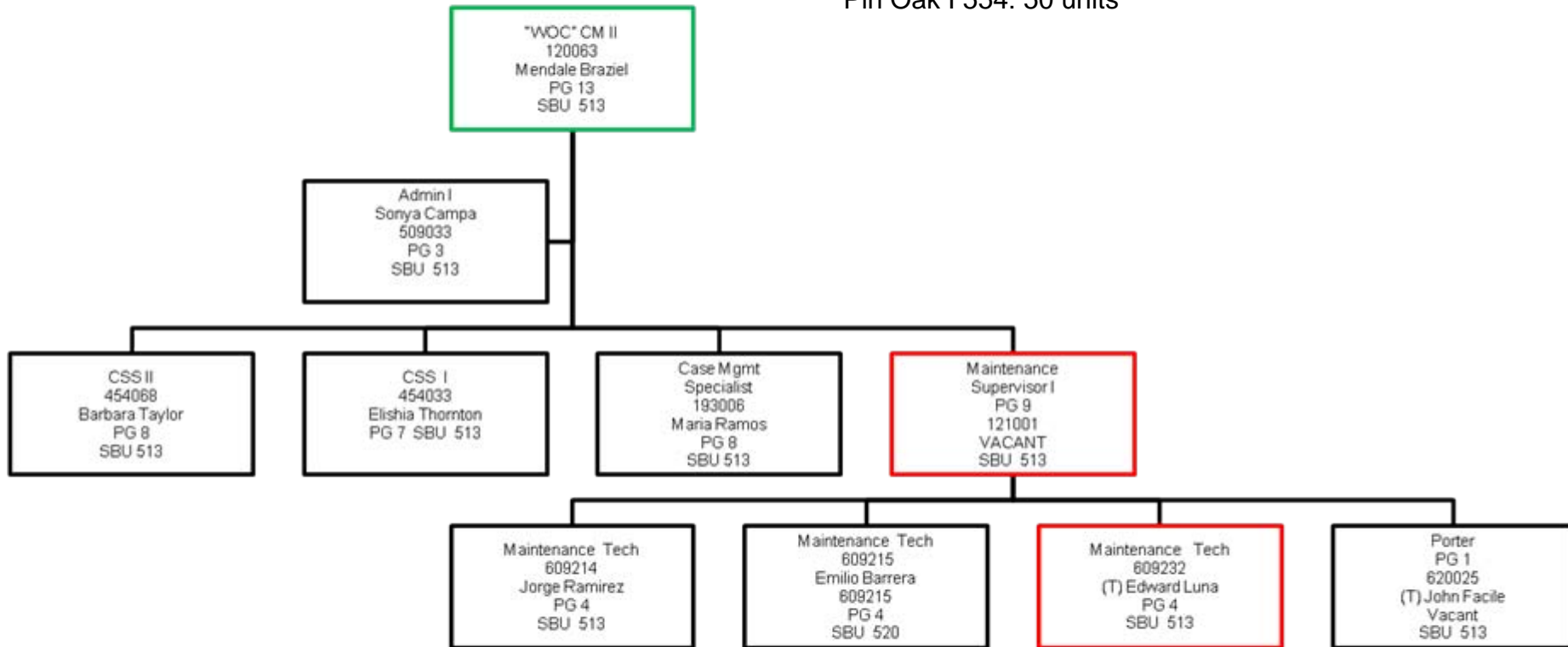
Entity III (351 units)



Sinkin/Highview 524: 50 units
Midway 519: 20 units
Fair 516: 216 units
Linda Lu 519: 10 units
Matt Garcia 516: 55 units

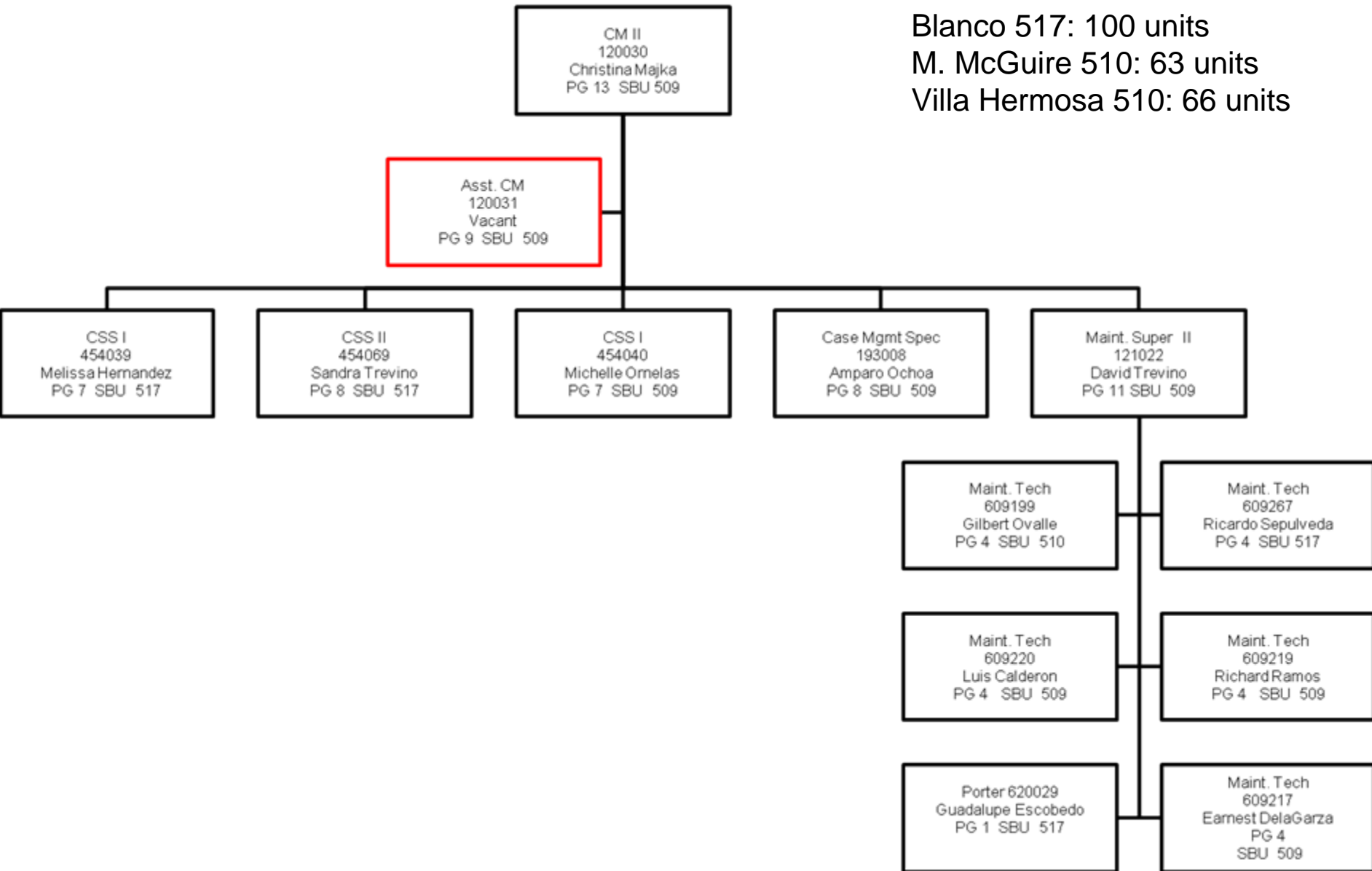
Entity IV (259 Units)

Tarry Towne 513: 98 units
Sahara 520: 16 units
Williamsburg 513: 15 units
Escondida 513: 20 units
Madonna 520: 60 units
Pin Oak I 554: 50 units



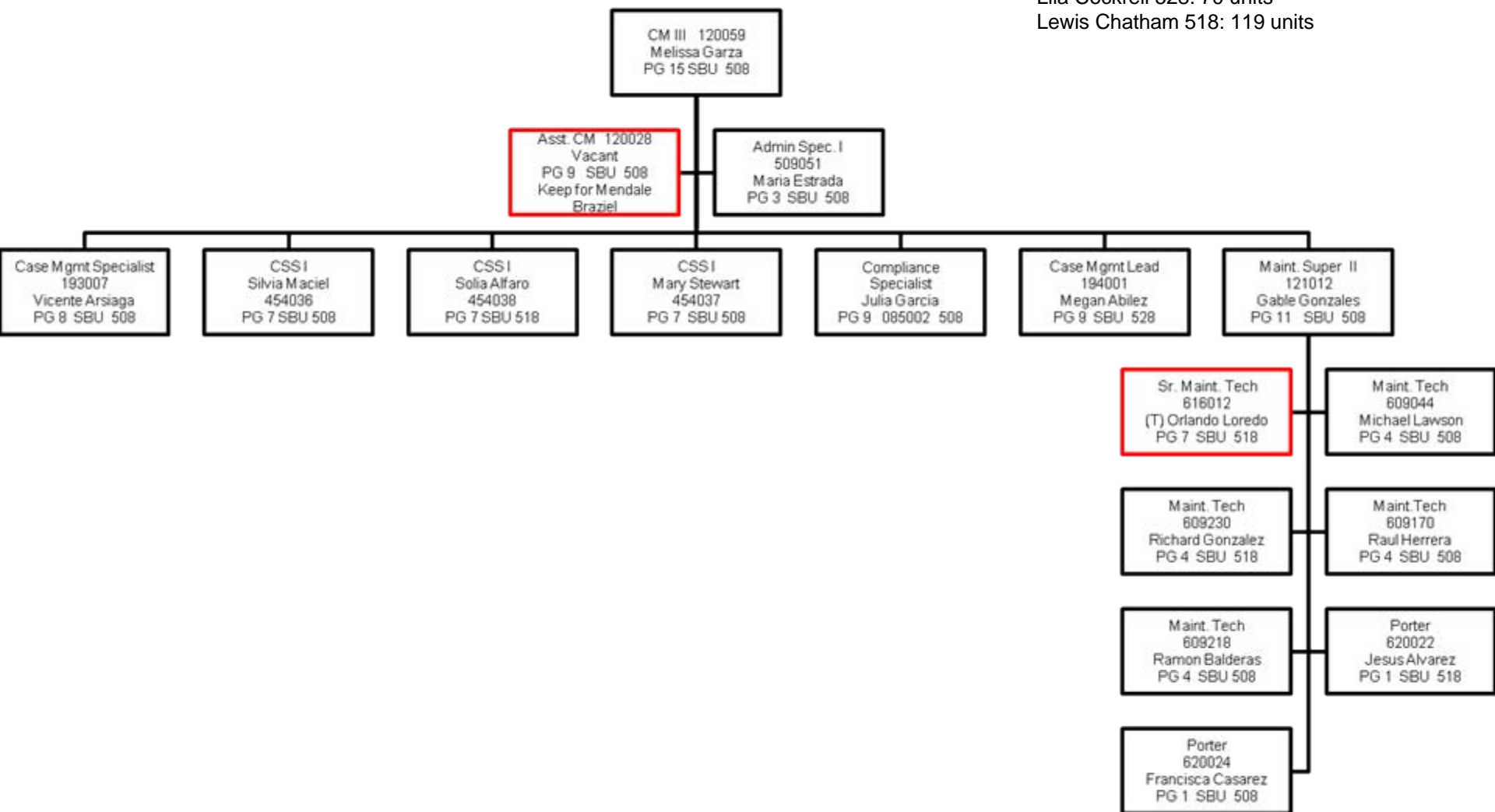
Entity V (430 units)

Villa Tranchese 509: 201 units
Blanco 517: 100 units
M. McGuire 510: 63 units
Villa Hermosa 510: 66 units



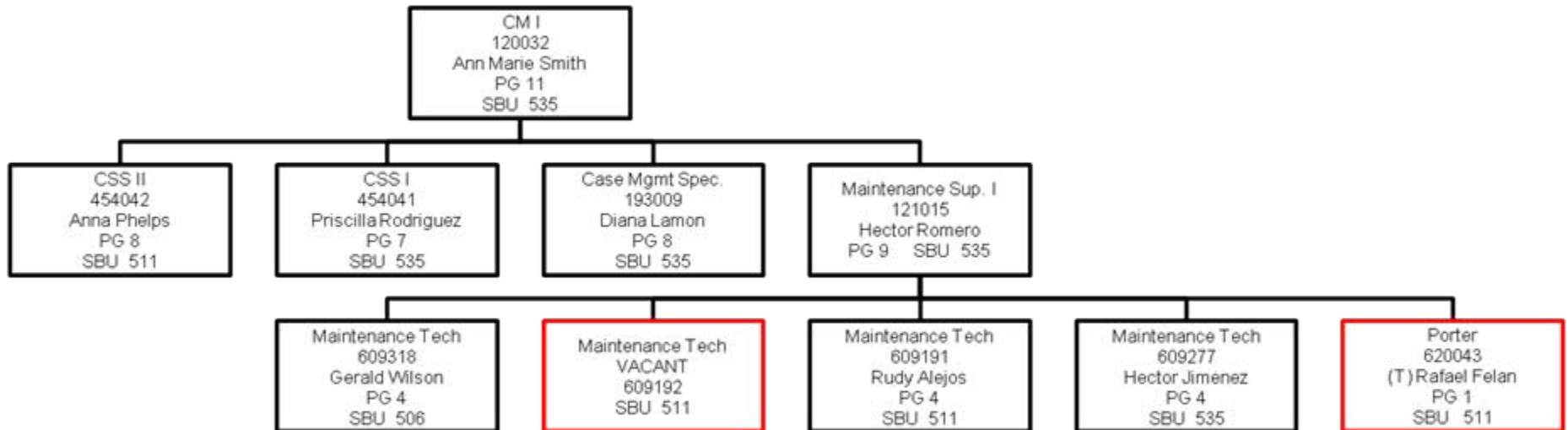
Entity VI (527 Units)

Victoria Plz 508: 185 units
OP Sch 508: 70 units
South San 528: 30 units
Lila Cockrell 528: 70 units
Lewis Chatham 518: 119 units



Entity VII (233 Units)

WC White 535: 75 units
Sun Park 511: 65 units
Frank Hornsby 511: 59 units
Le Chalet 506: 34 units



Administration (Pg 1)

